

**PERFORMANCE DATA SHEET**

3247

**Monoclonal anti-human CD56 (NCAM)\***

**mAb name/Clone:** ERIC-1

**Isotype:** Mouse IgG1κ

**Immunogen:** Human retinoblastoma tumor tissue, membrane fraction

**CATALOG#:** 208-020

**QUANTITY:** 100 µg

**CONCENTRATION:** 1.0 mg/ml

**INFORMATION:** Human CD56 is an adhesion molecule from the Ig superfamily which is restricted to NK cells in the immune system. It is believed that NK cells form a first line of defense against tumor cells and cells infected with bacteria and viruses. Antibody ERIC-1 recognizes a stem region epitope of the CD56 molecule(4).

**References:** 1) S.P. Bourne, et al, (1991) J Neuro-Oncol **10**: 111-119. 2) T.L. Whiteside and R.B. Herberman (1994) Clinical & Diagnostic Laboratory Immunology. 3) H. Spits, et al, (1995) Blood **85**: 2654-2670. 4) R. Gerardy-Schahn, M Eckhardt, (1994) Int J Cancer: Supp 8: 38-42.

**STORAGE CONDITIONS:** Store at 2 - 5°C. Freeze/Thawing is not recommended.

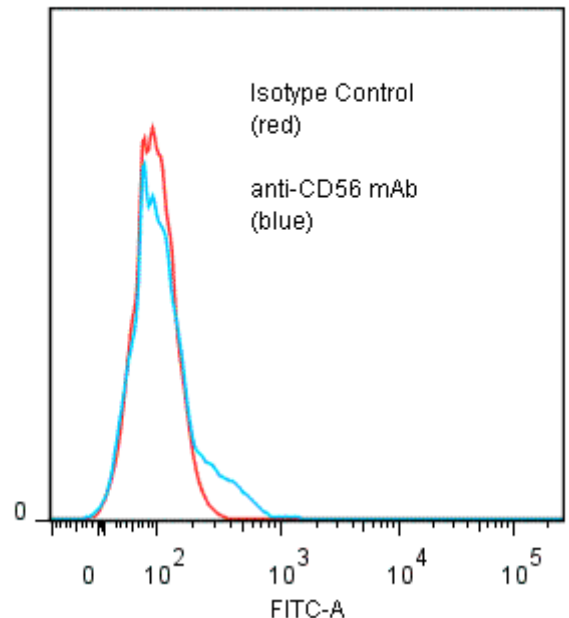
**PRODUCT STABILITY:** Product should retain activity for at least 12 months after shipping date when stored as recommended. Ship Date: \_\_\_\_\_

**BUFFER:** 50 mM Sodium Phosphate pH 7.5, 100 mM Potassium Chloride, 150mM NaCl, 0.5 mg/ml Gentamicin Sulfate (as a preservative).

**PRODUCTION:** Antibody was Protein A purified from (low FBS containing) tissue culture supernatant. Purity was >95% Immunoglobulin by SDS-PAGE with less than 1% Bovine Immunoglobulin.

**PERFORMANCE:** Five x 10<sup>5</sup> ficoll prepared **human peripheral blood mononuclear cells** were washed and pre incubated 5 minutes with 20 µl of 250 µg/ml human IgG (to block non specific binding) after which they were incubated 45 minutes on ice with 80 µl of anti-CD56 antibody at **10 µg/ml**. Cells were washed twice and incubated with 2<sup>o</sup> reagent Goat anti-Mouse IgG/FITC (Catalog #232-011), after which they were washed three times, fixed and analyzed by FACS. A net **8.7%** sub population of the cells stained positive with a mean shift of **0.69 log<sub>10</sub>** fluorescent units when compared to a Mouse IgG1 negative control (Catalog #278-010).

**Binding of anti-CD56 mAb +GAM/FITC to human PBMC**



*\*This Product is intended for Laboratory Research use only.*