

Monoclonal anti-human CD55 (DAF)*

mAb name/Clone: 67

Isotype: Mouse IgG1 κ

Immunogen: Human monocytes

CATALOG#: 207-820 (Preservative-free)

QUANTITY: 100 μ g

CONCENTRATION: 1.0 mg/ml

INFORMATION: Human CD55 is a GPI anchored protein that can protect cells from complement mediated lysis. Antibody 67 recognizes the CD55 molecule of 70 kd.

References: D.G. Palmer, et al, (1985) Clin Exp Immunol **59**: 529-538. Leukocyte Typing V (S.F. Schlossman, et al, eds.) Oxford University Press, Oxford (1995) p. 1473-1474.

STORAGE CONDITIONS: Store at 2 - 5°C. Open under aseptic conditions. Freeze/Thawing is not recommended.

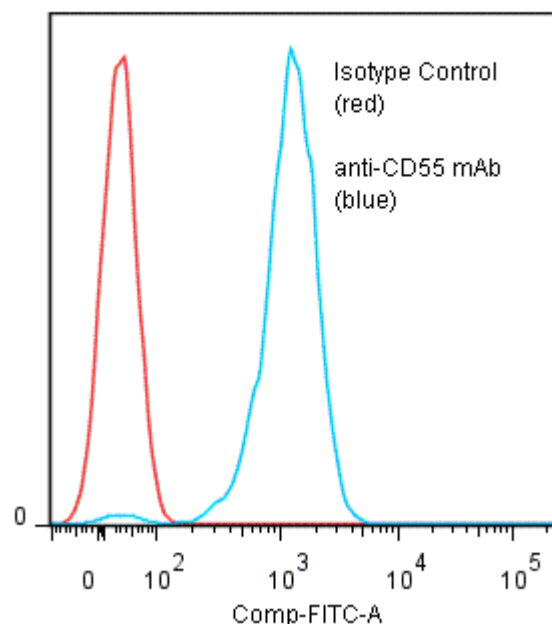
PRODUCT STABILITY: Product should retain activity for at least 6 months after shipping date when stored as recommended. Ship Date: _____

BUFFER: 50 mM Sodium Phosphate pH 7.5, 100 mM Potassium Chloride, 150mM NaCl.

PRODUCTION: Antibody was Protein A purified from (low FBS containing) tissue culture supernatant. Purity was >95% Immunoglobulin by SDS-PAGE and contains less than 1% Bovine Immunoglobulin. Product was 0.2 μ m filtered and vialled under aseptic conditions.

PERFORMANCE: Five $\times 10^5$ HPB-MLT human tumor cells were washed and incubated 45 minutes on ice with 80 μ l of anti-CD55 antibody at 10 μ g/ml. Cells were washed twice and incubated with 2^o reagent Goat anti-Mouse IgG/FITC (Catalog #232-011), after which they were washed three times, fixed and analyzed by FACS. Cells stained positive with a mean shift of 1.74 log₁₀ fluorescent units when compared to a Mouse IgG1 negative control (Catalog # 278-010).

Binding of anti-CD55 mAb +GAM/FITC to human HPB-MLT cells



**Research use only. Not for use in diagnostic procedures.*