

# PERFORMANCE DATA SHEET

3325

## Monoclonal anti-human CD55 (DAF)\*

**mAb name/Clone:** 67

**Isotype:** Mouse IgG1 $\kappa$

**Immunogen:** Human monocytes

**CATALOG#:** 207-020

**QUANTITY:** 100  $\mu$ g

**CONCENTRATION:** 1.0 mg/ml

**INFORMATION:** Human CD55 is a GPI anchored protein that can protect cells from complement mediated lysis. Antibody 67 recognizes the CD55 molecule of 70 kd.

**References:** D.G. Palmer, et al, (1985) Clin Exp Immunol **59**: 529-538. Leukocyte Typing V (S.F. Schlossman, et al, eds.) Oxford University Press, Oxford (1995) p. 1473-1474.

**STORAGE CONDITIONS:** Store at 2 - 5°C. Freeze/Thawing is not recommended.

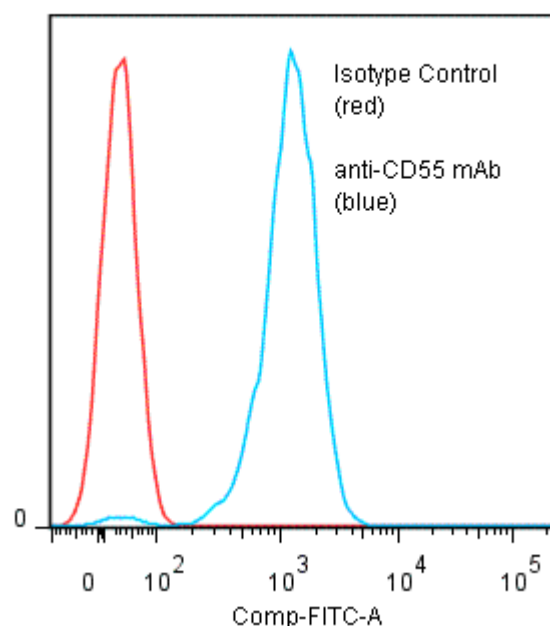
**PRODUCT STABILITY:** Product should retain activity for at least 12 months after shipping date when stored as recommended. Ship Date: \_\_\_\_\_

**BUFFER:** 50 mM Sodium Phosphate pH 7.5, 100 mM Potassium Chloride, 150mM NaCl, 0.5 mg/ml Gentamicin Sulfate (as a preservative).

**PRODUCTION:** Antibody was Protein A purified from (low FBS containing) tissue culture supernatant. Purity was >95% Immunoglobulin by SDS-PAGE with less than 1% Bovine Immunoglobulin.

**PERFORMANCE:** Five x 10<sup>5</sup> HPB-MLT human tumor cells were washed and incubated 45 minutes on ice with 80  $\mu$ l of anti-CD55 antibody at 10  $\mu$ g/ml. Cells were washed twice and incubated with 2<sup>o</sup> reagent Goat anti-Mouse IgG/FITC (Catalog #232-011), after which they were washed three times, fixed and analyzed by FACS. Cells stained positive with a mean shift of 1.74 log<sub>10</sub> fluorescent units when compared to a Mouse IgG1 negative control (Catalog # 278-010).

**Binding of anti-CD55 mAb +GAM/FITC to human HPB-MLT cells**



\* *Research Use Only. Not for use in Diagnostic procedures.*