

PERFORMANCE DATA SHEET

2034

Monoclonal anti-human CD54(ICAM-1) Domain D1/FITC*

Clone: 15.2

Isotype: Mouse IgG1κ

Immunogen: Human monocytes

CATALOG#: 205-040

QUANTITY: 120 tests

VOLUME IN VIAL: 0.2ml

WORKING DILUTION: 1:50 (or use 1.6µl of concentrated stock per 5 x 10⁵-cell test)

INFORMATION: Human CD54 (ICAM-1) mediates cell adhesion by binding to the integrins CD11a/CD18 (LFA-1) and to CD11b/CD18 (Mac-1). CD54 expression on resting peripheral blood leukocytes is weak but is upregulated on activated T and B lymphocytes and on monocytes. Antibody 15.2 recognizes the D1 domain of the CD54 molecule of 90 kd. Antibody 15.2 inhibits CD54 binding to LFA-1.

References: A.R. Berendt, et al, (1992) Cell **68**: 71-81. I. Dransfield, et al, (1992) J Cell Biol **116**: 1527-1535. Leukocyte Typing V (S.F. Schlossman, et al, eds.) Oxford University Press, Oxford, (1995) p. 1548-1550. P.L. Reilly, et al, (1995) J Immunol **155**: 529-532.

STORAGE CONDITIONS: Store at 2 - 5°C. Freeze/Thawing is not recommended. Protect from light.

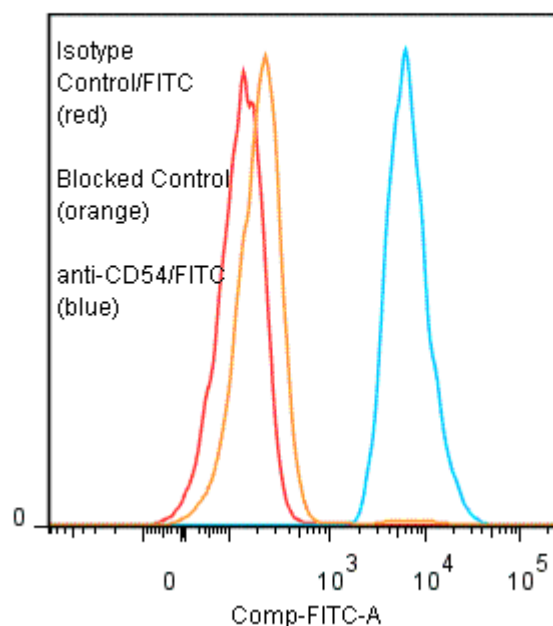
PRODUCT STABILITY: Product should retain activity for at least 12 months after shipping date when stored as recommended. Ship Date: _____

BUFFER: 50 mM Sodium Phosphate pH 7.5, 100 mM Potassium Chloride, 150mM NaCl, 5% Glycerol, 0.2% BSA, 0.04% NaN₃ (as a preservative).

PRODUCTION: Protein A purified antibody from tissue culture supernatant was reacted with FITC. Unconjugated FITC was separated from antibody/FITC conjugate by desalting column. The antibody/FITC conjugate is at **0.25 mg/ml** with a Fluorescein/IgG molar ratio of 7.9.

PERFORMANCE: Five x 10⁵ cultured **Raji** cells were washed and incubated 45 minutes on ice with 80 µl of anti-CD54/FITC at a **1:50** dilution factor (1 µg/ml). They were then washed three times, fixed and analyzed by FACS. Cells stained positive with a mean shift of **1.7 log₁₀** fluorescent units when compared to a Mouse IgG1/FITC negative control (Catalog #278-040) at a similar concentration. Binding was blocked when cells were pre incubated with an excess of unlabeled anti-CD54(D1) antibody (cat# 205-020).

Binding of anti-CD54(D1)/FITC to human Raji cells



* **Research Use Only. Not for use in Diagnostic procedures.**