

PERFORMANCE DATA SHEET

1817

Monoclonal anti-human CD50 (ICAM-3)*

mAb name/Clone: 186-2G9

Isotype: Mouse IgG2bκ

Immunogen: Stimulated human leukocytes

CATALOG#: 201-020

QUANTITY: 100 µg

CONCENTRATION: 1.0 mg/ml

INFORMATION: Human CD50 is an adhesion molecule that interacts with LFA-1 (CD18/CD11a) and provides a costimulatory signal for T cells (1, 2, 3) which is thought to be essential for initiation of immune responses. Antibody 186-2G9 recognizes the D1 domain of the ICAM-3 molecule of 130 kd (4), and blocks binding of CD11a (LFA-1) to CD50 (ICAM-3).

References: 1) Leukocyte Typing V (S.F. Schlossman, et al, eds.) Oxford University Press, Oxford (1995) p. 1546-1547, 1578-1579. 2) C.L. Holness, et al, (1995) J Biol Chem 270: 877-884. 3) Y. van Kooyk, et al, (1996) J Exp Med 183: 1247-1252. 4) Leukocyte Typing VI (T. Kishimoto, et al, eds.) Garland Publishing, Inc., New York (1997) p. 403-409.

STORAGE CONDITIONS: Store at 2 - 5°C. Freeze/Thawing is not recommended.

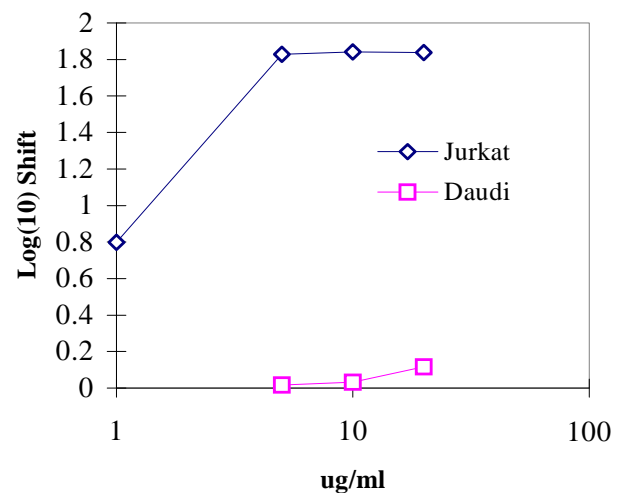
PRODUCT STABILITY: Product should retain activity for at least 12 months after shipping date when stored as recommended. Ship Date: _____

BUFFER: 50 mM Sodium Phosphate pH 7.5, 100 mM Potassium Chloride, 150mM NaCl, 0.5 mg/ml Gentamicin Sulfate (as a preservative).

PRODUCTION: Antibody was Protein A purified from (low FBS containing) tissue culture supernatant. Purity was >95% Immunoglobulin by SDS-PAGE with less than 1% Bovine Immunoglobulin.

PERFORMANCE: Five x 10⁵ cultured human **Jurkat** cells per tube were washed and pre incubated 5 minutes on ice with 20 µl of 250 µg/ml human IgG (to block non specific binding) after which they were incubated 45 minutes on ice with 80 µl of anti-CD50 antibody at **10 µg/ml**. Cells were washed twice and incubated with 2^o reagent Goat anti-Mouse IgG/FITC (Catalog #232-011), after which they were washed three times, fixed and analyzed by FACS. Cells stained positive with a mean shift of **1.84** log₁₀ fluorescent units when compared to a Mouse IgG2b negative control (Catalog # 284-010) at a similar concentration.

Binding of anti-CD50 antibody to human cell lines



**This Product is intended for Laboratory Research use only.*