

**PERFORMANCE DATA SHEET**

2629

**Monoclonal anti-human CD49d (VLA-4)/R-PE \***

**mAb name/Clone:** BU49

**Isotype:** Mouse IgG1

**Immunogen:** Human peripheral myeloma cells

**CATALOG#:** 200-050

**QUANTITY:** 120 tests

**VOLUME IN VIAL:** 0.2 ml

**WORKING DILUTION:** 1:50 (or use 1.6µl of concentrated stock per 5 x 10<sup>5</sup>-cell test)

**INFORMATION:** Human CD49d molecules are integrin α4 chains that are expressed as heterodimers with CD29 (β1 integrin) or (β7 integrin) and function as adhesion receptors. CD49d/CD29 is mainly expressed on thymocytes and B cells with increased expression on activated T cells. The ligands for CD49d/CD29 include VCAM-1 and fibronectin. Antibody BU49 recognizes the CD49d molecule of about 145 kd.

**References:** Leukocyte Typing V (S.F. Schlossman, et al, eds.) Oxford University Press, Oxford, (1995) p. 1617-1618.  
T. Sato, (1995) J Immunol **155**: 2938-2947.

**STORAGE CONDITIONS:** Store at 2 - 5°C. Do not freeze! Protect from light.

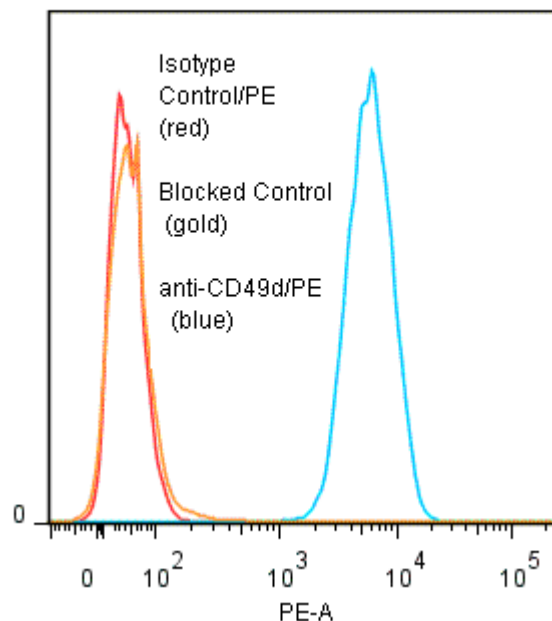
**PRODUCT STABILITY:** Product should retain activity for at least 12 months after shipping date when stored as recommended. Ship Date: \_\_\_\_\_

**BUFFER:** 50 mM Sodium Phosphate pH 7.5, 500 mM Potassium Chloride, 150mM NaCl, 15% Glycerol, 0.2% BSA, 0.04% NaN<sub>3</sub> (as a preservative).

**PRODUCTION:** Protein A purified antibody from tissue culture supernatant was conjugated to R-Phycoerythrin through a sulfo-ester linkage. Unconjugated antibody was removed using size exclusion chromatography. Antibody conjugate is at **0.5 mg/ml** with an A<sub>565</sub>/A<sub>280</sub> ratio of 2.75.

**PERFORMANCE:** Five x 10<sup>5</sup> cultured human **HPB-MLT** cells were incubated 45 minutes on ice with 80 µl of anti-CD49d/R-PE at a dilution factor of **1:50** (10 µg/ml). Cells were washed three times, fixed and analyzed by FACS. Cells stained positive with a mean shift of **2.19 log<sub>10</sub>** fluorescent units when compared to a Mouse IgG1/R-PE negative control (Catalog #278-050). Binding was blocked when cells were pre incubated 10 minutes with 20 µl of 0.5 mg/ml anti-CD49d antibody (Catalog #200-020).

**Binding of anti-CD49d/PE to human HPB-MLT cells**



*\*Research use only. Not for use in Diagnostic procedures.*