

**PERFORMANCE DATA SHEET**

2410

**Monoclonal anti-human CD48(Blast-1)/R-PE\***

**mAb name/Clone:** 5-4.8

**Isotype:** Mouse IgG2ak

**Immunogen:** Human PBLs

**CATALOG#:** 199-050

**QUANTITY:** 120 tests

**VOLUME IN VIAL:** 0.2 ml

**WORKING DILUTION:** 1:50 (or use 1.6µl of concentrated stock per 5 x 10<sup>5</sup>-cell test)

**INFORMATION:** Human CD48 is a GPI anchored cell surface glycoprotein found on all lymphocytes and monocytes. CD48 is a ligand for CD2 and may be involved in enhancing the activating signal to B cells. Antibody 5-4.8 recognizes epitope 4 of the CD48 molecule of 47 kd (4).

**References:** (1) H.A. Vaughan, et al, (1983) Transplantation 36: 446-450. (2) H.A. Vaughan, et al, (1991) Immunogenetics 33: 113-117. (3) E.N. Klyushenkova, et al, (1996) Cellular Immunol 174: 90-98. (4) Leukocyte Typing VI (T. Kishimoto, et al, eds.) Garland Publishing, Inc., New York (1997) p. 509-512.

**STORAGE CONDITIONS:** Store at 2 - 5°C. Do not freeze! Protect from light.

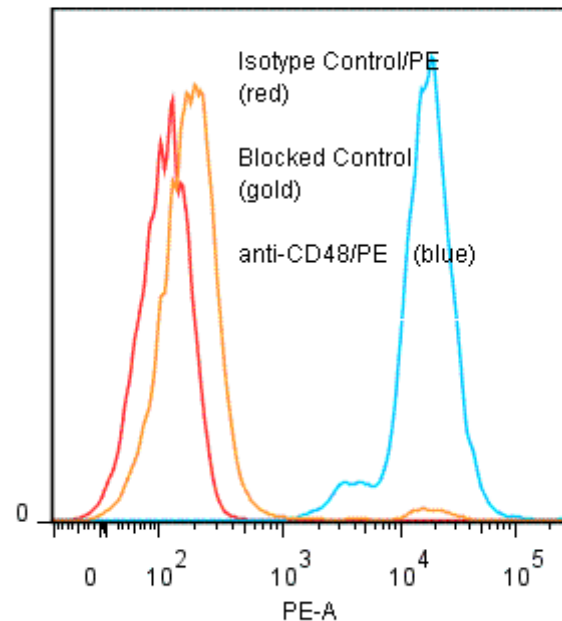
**PRODUCT STABILITY:** Product should retain activity for at least 12 months after shipping date when stored as recommended. Ship Date: \_\_\_\_\_

**BUFFER:** 50 mM Sodium Phosphate pH 7.5, 500 mM Potassium Chloride, 150mM NaCl, 15% Glycerol, 0.2% BSA, 0.04% NaN<sub>3</sub> (as a preservative).

**PRODUCTION:** Protein A purified antibody from tissue culture supernatant was conjugated to R-Phycoerythrin through a sulfo-ester linkage. Unconjugated antibody was removed using size exclusion chromatography. Antibody conjugate is at 0.5 mg/ml with an A<sub>565</sub>/A<sub>280</sub> ratio of 3.05.

**PERFORMANCE:** Five x 10<sup>5</sup> cultured human Raji cells per tube were washed and incubated 45 minutes on ice with 80 µl of anti-CD48/R-PE at a 1:50 dilution factor (10 µg/ml). They were then washed twice, fixed and analyzed by FACS. Cells stained positive with a mean shift of 2.2 log<sub>10</sub> fluorescent units when compared to a Mouse IgG2a/R-PE negative control (Catalog #281-050) at a similar concentration. Binding was blocked when cells were pre incubated 10 minutes with 20 µl of 0.5 mg/ml anti-CD48 antibody (Catalog #199-020).

**Binding of anti-CD48/PE to human Raji cells**



\* Research Use Only. Not for use in Diagnostic procedures.