

PERFORMANCE DATA SHEET

3124

Monoclonal anti-human CD48(Blast-1)/FITC*

mAb name/Clone: 5-4.8

Isotype: Mouse IgG2ak

Immunogen: Human PBLs

CATALOG#: 199-040

QUANTITY: 120 tests

VOLUME IN VIAL: 0.2 ml

WORKING DILUTION: 1:50 (or use 1.6µl of concentrated stock per 5 x 10⁵-cell test)

INFORMATION: Human CD48 is a GPI anchored cell surface glycoprotein found on all lymphocytes and monocytes. CD48 is a ligand for CD2 and may be involved in enhancing the activating signal to B cells. Antibody 5-4.8 recognizes epitope 4 of the CD48 molecule of 47 kd (4).

References: (1) H.A. Vaughan, et al, (1983) Transplantation 36: 446-450. (2) H.A. Vaughan, et al, (1991) Immunogenetics 33: 113-117. (3) E.N. Klyushenkova, et al, (1996) Cellular Immunol 174: 90-98. (4) Leukocyte Typing VI (T. Kishimoto, et al, eds.) Garland Publishing, Inc., New York (1997) p. 509-512.

STORAGE CONDITIONS: Store at 2 - 5°C. *Freeze/Thawing is not recommended. Protect from light.*

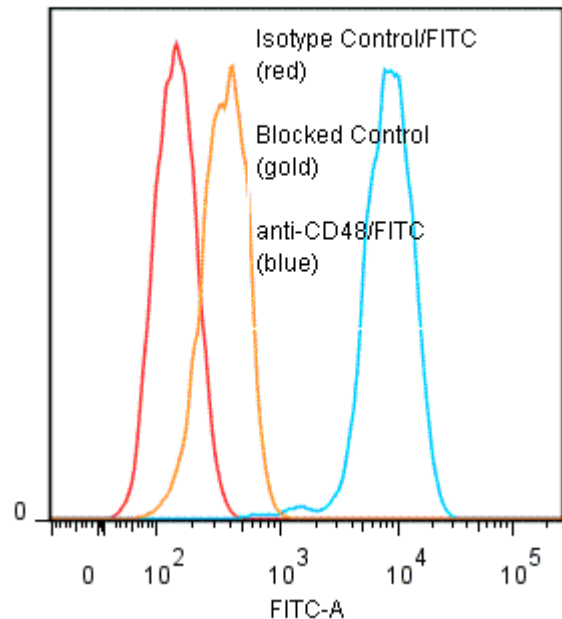
PRODUCT STABILITY: Product should retain activity for at least 12 months after shipping date when stored as recommended. Ship Date: _____

BUFFER: 50 mM Sodium Phosphate pH 7.5, 100 mM Potassium Chloride, 150mM NaCl, 5% Glycerol, 0.2% BSA, 0.04% NaN₃ (as a preservative).

PRODUCTION: Antibody from (low FBS containing) tissue culture supernatant was Protein A purified and reacted with FITC. Unconjugated FITC was removed from conjugate using a desalting column. Antibody conjugate is at **0.25 mg/ml** with a Fluorescein/IgG molar ratio of 4.9.

PERFORMANCE: Five x 10⁵ cultured human **Raji** cells per tube were washed and incubated 45 minutes on ice with 80 µl of anti-CD48/FITC at a **1:50** dilution (10 µg/ml). Cells were washed three times, fixed and analyzed by FACS. Cells stained positive with a mean shift of **1.75 log₁₀** fluorescent units when compared to a Mouse IgG2a/FITC negative control (Catalog # 281-040). Binding was blocked when cells were pre incubated 10 minutes with 20 µl of 0.5 mg/ml anti-CD48 antibody (Catalog #199-020).

Binding of anti-CD48/FITC to human Raji cells



**Research use only. Not for use in Diagnostic procedures.*