

Monoclonal anti-human CD48(Blast-1)/Biotin*

mAb name/Clone: 5-4.8

Isotype: Mouse IgG2ak

Immunogen: Human PBLs

CATALOG#: 199-030

QUANTITY: 100 µg

CONCENTRATION: 1.0 mg/ml

INFORMATION: Human CD48 is a GPI anchored cell surface glycoprotein found on all lymphocytes and monocytes. CD48 is a ligand for CD2 and may be involved in enhancing the activating signal to B cells. Antibody 5-4.8 recognizes epitope 4 of the CD48 molecule of 47 kd (4).

References: (1) H.A. Vaughan, et al, (1983) Transplantation 36: 446-450. (2) H.A. Vaughan, et al, (1991) Immunogenetics 33: 113-117. (3) E.N. Klyushnenkova, et al, (1996) Cellular Immunol 174: 90-98. (4) Leukocyte Typing VI (T. Kishimoto, et al, eds.) Garland Publishing, Inc., New York (1997) p. 509-512.

STORAGE CONDITIONS: Store at 2 - 5°C. Freeze/thawing not recommended.

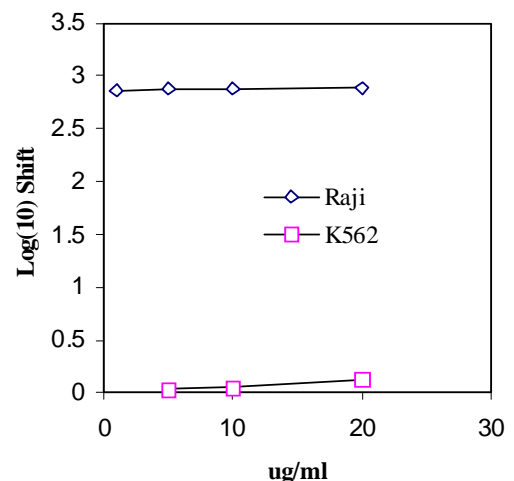
PRODUCT STABILITY: Product should retain activity for at least 12 months after shipping date when stored as recommended. Ship Date: _____

BUFFER: 50 mM Sodium Phosphate pH 7.5, 100 mM Potassium Chloride, 150mM NaCl, 5% Glycerol, 0.2% BSA, 0.04% NaN₃ (as a preservative).

PRODUCTION: Antibody from (low FBS containing) tissue culture supernatant was Protein A purified to >95% mouse immunoglobulin by SDS-PAGE (<1% bovine immunoglobulin), and reacted with NHS-Biotin. Unconjugated Biotin was removed from conjugate using a desalting column.

PERFORMANCE Five x 10⁵ cultured human **Raji** cells per tube were washed and incubated 45 minutes on ice with 80 µl of anti-CD48/Biotin at a concentration of **5 µg/ml**. Cells were washed twice and incubated with 2^o reagent Steptavidin/R-PE (Catalog #253-050), after which they were washed three times, fixed and analyzed by FACS. Cells stained positive with a mean shift of **2.87 log₁₀** fluorescent units when compared to a Mouse IgG2a/Biotin negative control (Catalog #281-030) at a similar concentration. Binding was blocked when cells were pre incubated 10 minutes with 20 µl of 0.5 mg/ml anti-CD48 antibody (Catalog #199-020).

Binding of anti-CD48/Biotin to human cell lines



**This Product is intended for Laboratory Research use only.*