

**PERFORMANCE DATA SHEET**

2639

**Monoclonal anti-human CD47 \***

**mAb name/Clone:** ANC2F6

**Isotype:** Mouse IgG1

**Immunogen:** Recombinant human CD47 (extracellular Ig domain)

**CATALOG#:** 198-020

**QUANTITY:** 100 µg

**CONCENTRATION:** 1.0 mg/ml

**INFORMATION:** Human CD47 (IAP, Integrin Associated Protein) is a broadly expressed Ig superfamily glycoprotein of about 50kD with a long extracellular Ig like domain, 5 transmembrane domains and an alternatively spliced intracellular c-terminal domain. It interacts with its ligand SIRP alpha (CD172a, Signal Regulatory Protein) expressed mainly on myeloid cells serving as a negative immune regulator, inhibiting phagocytosis. The CD47-SIRPα axis is being investigated as possible anti-tumor immune intervention point. Clone ANC2F6 binds to an epitope within the extracellular Ig-like domain of human CD47.

**References:** 1) Xiaojuan Liu, Yang-xin Fu, et al. (2017) *J Hematol Oncol* **10**:12. doi:10.1186/s13045-016-0381-z PMID: 28077173.

**STORAGE CONDITIONS:** Store at 2 - 5°C. Freeze/Thawing is not recommended.

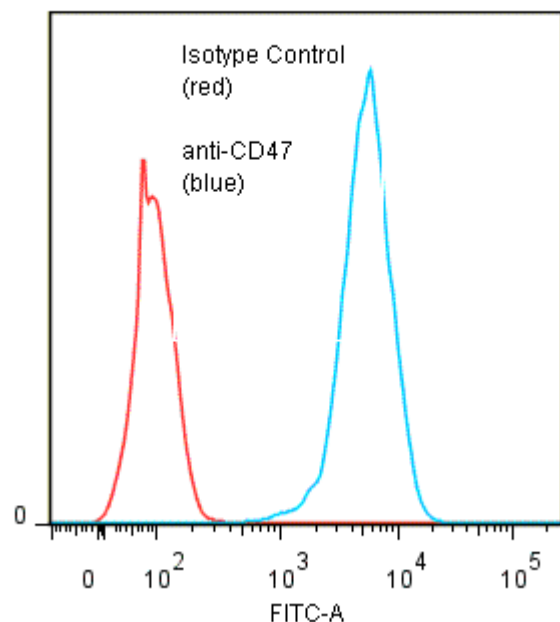
**PRODUCT STABILITY:** Product should retain activity for at least 12 months after shipping date when stored as recommended. Ship Date: \_\_\_\_\_

**BUFFER:** 50 mM Sodium Phosphate pH 7.5, 100 mM Potassium Chloride, 150mM NaCl, 0.5 mg/ml Gentamicin sulfate (as a preservative).

**PRODUCTION:** Antibody was Protein A purified from (low FBS containing) tissue culture supernatant. Purity was >95% Immunoglobulin by SDS-PAGE and contains less than 1% Bovine Immunoglobulin. Product was 0.2 µm filtered and vialled under aseptic conditions.

**PERFORMANCE:** Five x 10<sup>5</sup> cultured human CEM cells were washed and incubated 45 minutes on ice with 80 µl of anti-CD47 antibody at 10 µg/ml. Cells were washed twice and incubated with 2° reagent Goat anti-Mouse IgG/FITC (Catalog #232-011), after which they were washed three times, fixed and analyzed by FACS. Cells stained positive with a mean shift of 1.78 log<sub>10</sub> fluorescent units when compared to a Mouse IgG1 negative control (Catalog # 278-010).

**Binding of anti-CD47 antibody +GAM/FITC to human CEM cells**



\* **Research Use Only. Not for use in Diagnostic procedures.**