

PERFORMANCE DATA SHEET

1817

Monoclonal anti-human CD46 (MCP)***mAb name/Clone:** 169-1-E4.3**Isotype:** Mouse IgG2ak**Immunogen:** Human PBL and EBV transformed LCL**CATALOG#:** 197-020**QUANTITY:** 100 µg**CONCENTRATION:** 1.0 mg/ml

INFORMATION: Human CD46 is a cell surface glycoprotein expressed on almost all human cells except erythrocytes. CD46 is involved with regulation of complement activation and is also a measles virus receptor. Antibody 169-1-E4.3 recognizes the SCR1 epitope of CD46 (3).

References: 1.) R.L. Sparrow and I.F.C. McKenzie, (1983) Human Immunol 7: 1-15. 2.) D. Christiansen, et al, (1996) Eur J Immunol 26: 578-585. 3.) Leukocyte Typing VI (T. Kishimoto, et al, eds.) Garland Publishing, Inc., New York (1997) p. 506-509.

STORAGE CONDITIONS: Store at 2 - 5°C. Freeze/Thawing is not recommended.

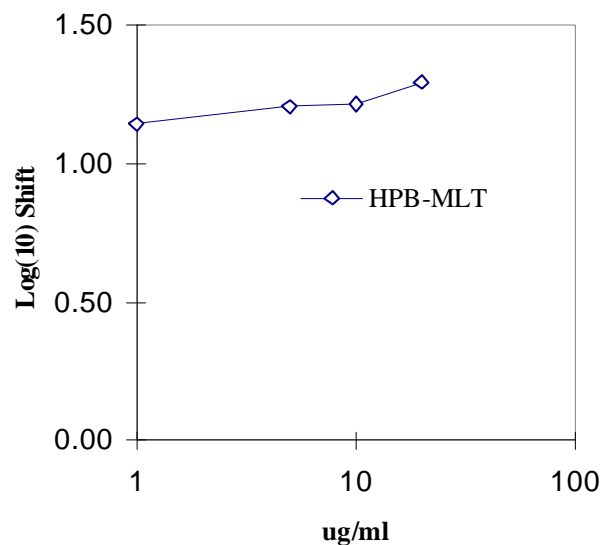
PRODUCT STABILITY: Product should retain activity for at least 12 months after shipping date when stored as recommended. Ship Date: _____

BUFFER: 50 mM Sodium Phosphate pH 7.5, 100 mM Potassium Chloride, 150mM NaCl, 0.5 mg/ml Gentamicin Sulfate (as a preservative).

PRODUCTION: Antibody was Protein A purified from (low FBS containing) tissue culture supernatant. Purity was >95% Immunoglobulin by SDS-PAGE with less than 1% Bovine Immunoglobulin.

PERFORMANCE: Five x 10⁵ cultured human **HPB-MLT** cells per tube were washed and incubated 45 minutes on ice with 80 µl of anti-CD46 antibody at a concentration of **5 µg/ml**. Cells were washed twice and incubated with 2^o reagent Goat anti-Mouse IgG/FITC (Catalog #232-011), after which they were washed three times, fixed and analyzed by FACS. Cells stained positive with a mean shift of **1.20 log₁₀** fluorescent units when compared to a Mouse IgG2a negative control (Catalog #281-010) at a similar concentration.

Binding of anti-CD46 antibody to human HPB-MLT cells



* *Research Use Only. Not for use in Diagnostic procedures.*