

PERFORMANCE DATA SHEET

2421

Monoclonal anti-human CD45/R-PE *

mAb name/Clone: C11

Isotype: Mouse IgG2ak

Immunogen: Peripheral blood mononuclear cells

CATALOG#: 196-050

QUANTITY: 120 tests

VOLUME IN VIAL: 0.2 ml

WORKING DILUTION: 1:50 (or use 1.6µl of concentrated stock per 5 x 10⁵-cell test)

INFORMATION: Human CD45 is expressed on all cells of hematopoietic origin, except erythrocytes. CD45 is a transmembrane tyrosine phosphatase which can exist in at least nine different isoforms resulting from tissue-specific alternative RNA splicing of exons 4-7 of a single gene coding for the various N-terminal peptide segments. CD45 plays an essential role in lymphocyte activation. Antibody C11 recognizes all isoforms of CD45.

References: U. Dianzani, et al, (1992) Eur J Immunol **22**: 365-371. I.S. Trowbridge & M.L. Thomas, (1994) Annu Rev Immunol **12**: 85-116. Leukocyte Typing V (S.F. Schlossman, et al, eds.) Oxford University Press, Oxford, (1995) p. 386-399. D. Leitenberg, et al, (1996) J Exp Med **183**: 249-259.

STORAGE CONDITIONS: Store at 2 - 5°C. Do not freeze! Protect from light.

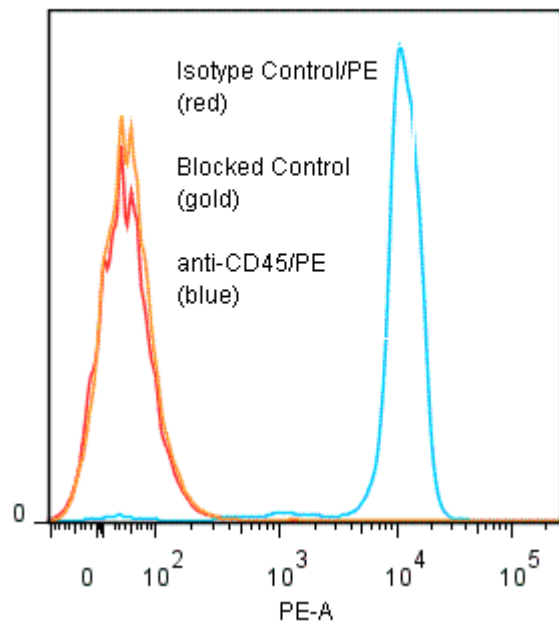
PRODUCT STABILITY: Product should retain activity for at least 12 months after shipping date when stored as recommended. Ship Date: _____

BUFFER: 50 mM Sodium Phosphate pH 7.5, 500 mM Potassium Chloride, 150mM NaCl, 15% Glycerol, 0.2% BSA, 0.04% NaN₃ (as a preservative).

PRODUCTION: Protein A purified antibody from tissue culture supernatant was conjugated to R-Phycoerythrin through a sulfo-ester linkage. Unconjugated antibody was removed using size exclusion chromatography. Antibody conjugate is at **0.5 mg/ml** with an A₅₆₅/A₂₈₀ ratio of 2.98.

PERFORMANCE: Five x 10⁵ ficoll prepared **human peripheral blood mononuclear cells** were washed and pre incubated ~10 minutes with 20 µl human IgG at 250 µg/ml (to block non specific binding), after which they were incubated 45 minutes on ice with 80 µl of anti-CD45/R-PE at a **1:50** dilution (10 µg/ml). Cells were washed three times, fixed and analyzed by FACS. Cells stained positive with a mean shift of **2.4 log₁₀** fluorescent units when compared to a Mouse IgG2a/R-PE negative control (Catalog #281-050) at a similar concentration. Binding was blocked when cells were pre incubated 10 minutes with 20 µl of 0.5 mg/ml anti-CD45 antibody (Catalog #196-020).

Binding of anti-CD45/PE to human PBMC



**Research Use Only. Not for use in Diagnostic procedures.*