

PERFORMANCE DATA SHEET

3030

Monoclonal anti-human CD45RO ***mAb name/Clone:** UCHL1**Isotype:** Mouse IgG2a**Immunogen:** Cultured human T cell line - CA1**CATALOG#:** 194-820 (Preservative Free)**QUANTITY:** 100 µg**CONCENTRATION:** 1.0 mg/ml

INFORMATION: Human CD45 is expressed on all cells of hematopoietic origin, except erythrocytes. CD45 is a transmembrane tyrosine phosphatase which can exist in at least nine different isoforms resulting from tissue-specific alternative RNA splicing of exons 4-7 of a single gene coding for the various N-terminal peptide segments. The CD45RO isoform contains none of the alternatively spliced exons and is present on most thymocytes, a subpopulation of resting (memory) T cells within both CD4 and CD8 subsets as well as on monocytes and granulocytes. CD45RO plays an essential role in lymphocyte activation. Antibody UCHL1 recognizes the CD45RO isoform of about 180 kd.

References: S.H. Smith, et al, (1986) *Immunology* **58**: 63-70. M. Streulo, et al, (1988) *J Immunol* **141**: 3910-3914. M. Merckenschlager & P.C.L. Beverly, (1989) *Intl Immunol* **1**: 450-459. I.S. Trowbridge & M.L. Thomas, (1994) *Annu Rev Immunol* **12**: 85-116. *Leukocyte Typing V* (S.F. Schlossman, et al, eds.) Oxford University Press, Oxford, (1995) p. 386-399. D. Leitenberg, et al, (1996) *J Exp Med* **183**: 249-259.

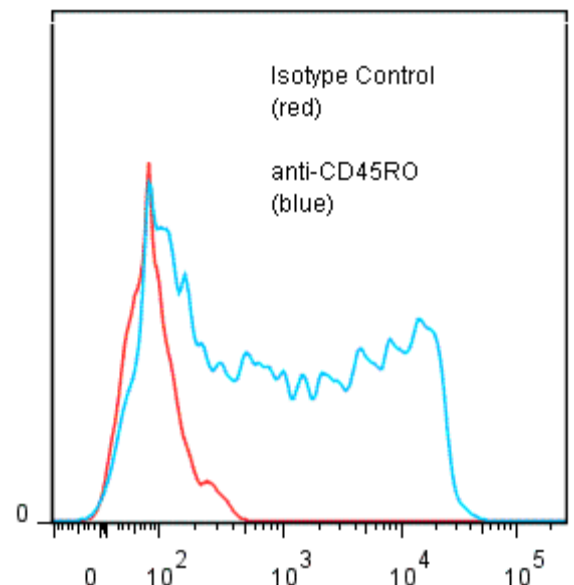
STORAGE CONDITIONS: Store at 2 - 5°C. Open under aseptic conditions. Freeze/Thawing is not recommended.

PRODUCT STABILITY: Product should retain activity for at least 12 months after shipping date when stored as recommended. Ship Date: _____

BUFFER: 50 mM Sodium Phosphate pH 7.5, 100 mM Potassium Chloride, 150mM NaCl.

PRODUCTION: Antibody was Protein A purified from (low FBS containing) tissue culture supernatant. Purity was >95% Immunoglobulin by SDS-PAGE and contains less than 1% Bovine Immunoglobulin. Product was 0.2 µm filtered and vialled under aseptic conditions.

PERFORMANCE: Five x 10⁵ ficoll prepared **human peripheral blood mononuclear cells** were washed and pre incubated 5 minutes with 20 µl of 250µg/ml human IgG (to block nonspecific binding) after which they were incubated 45 minutes on ice with 80 µl of anti-CD45RO antibody at **10 µg/ml**. Cells were washed twice and incubated with 2^o reagent Goat anti-Mouse IgG/FITC (Catalog #232-011), after which they were washed three times, fixed and analyzed by FACS. A net **59%** sub population of the cells stained positive with a mean shift of **1.83** log₁₀ fluorescent units when compared to a Mouse IgG2a negative control (Catalog #281-010).

Binding of anti-CD45RO mAb +GAM/FITC to human PBMC

* *Research Use Only. Not for use in Diagnostic procedures.*