

PERFORMANCE DATA SHEET

3323

Monoclonal anti-human CD41a (GP IIb)*

mAb name/Clone: 96.2C1

Isotype: Mouse IgG1

Immunogen: Human PBL

CATALOG#: 190-820 (Preservative Free)

QUANTITY: 100 µg

CONCENTRATION: 1.0 mg/ml

INFORMATION: Human CD41 is a member of major platelet transmembrane glycoprotein complex (CD41/CD61) which mediates platelet aggregation and adhesion by serving as the receptor for fibrinogen and von Willebrand factor, fibronectin and vitronectin. Antibody 96.2C1 recognizes the CD41a molecule of about 140 kd (1).

References: 1)Leukocyte Typing III (A.J. McMichael, et al, eds.) Oxford University Press, Oxford, (1987) p. 744.
2)Leukocyte Typing VI (T. Kishimoto, et al, eds.) Garland Publishing, Inc., New York (1997) p. 643-648.

STORAGE CONDITIONS: Store at 2 - 5°C. *Open under aseptic conditions.* Freeze/Thawing is not recommended.

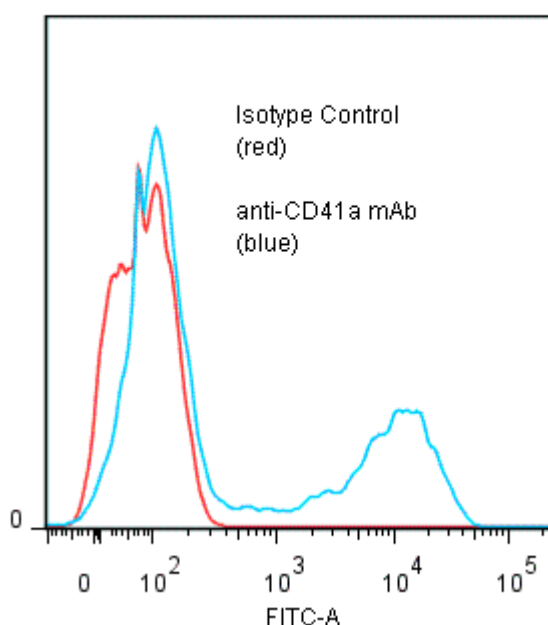
PRODUCT STABILITY: Product should retain activity for at least 12 months after shipping date when stored as recommended. Ship Date:_____

BUFFER: 50 mM Sodium Phosphate pH 7.5, 100 mM Potassium Chloride, 150mM NaCl.

PRODUCTION: Antibody was Protein A purified from (low FBS containing) tissue culture supernatant. Purity was >95% Immunoglobulin by SDS-PAGE and contains less than 1% Bovine Immunoglobulin. Product was 0.2 µm filtered and vialled under aseptic conditions.

PERFORMANCE: Five x 10⁵ ficoll prepared human peripheral blood mononuclear cells were washed and pre incubated 5 minutes with 20 µl of 250 µg/ml human IgG (to block non specific binding) after which they were incubated 45 minutes on ice with 80 µl of anti-CD41a antibody at 10 µg/ml. Cells were washed twice and incubated with 2^o reagent Goat anti-Mouse IgG/FITC (Catalog #232-011), after which they were washed three times, fixed and analyzed by FACS. A net 31.8% sub population of the cells stained positive with a mean shift of 2.15 log₁₀ fluorescent units when compared to a Mouse IgG1 negative control (Catalog # 278-010).

**Binding of anti-CD41a mAb
+GAM/FITC to human PBMC**



**Research use only. Not for use in Diagnostic procedures.*