

PERFORMANCE DATA SHEET

2507

Monoclonal anti-human CD41a(GP IIb)/R-PE *

mAb name/Clone: 96.2C1

Isotype: Mouse IgG1

Immunogen: Human PBL

CATALOG#: 190-050

QUANTITY: 120 tests

VOLUME IN VIAL: 0.2 ml

WORKING DILUTION: 1:50 (or use 1.6µl of concentrated stock per 5 x 10⁵-cell test)

INFORMATION: Human CD41 is a member of major platelet transmembrane glycoprotein complex (CD41/CD61) which mediates platelet aggregation and adhesion by serving as the receptor for fibrinogen and von Willebrand factor, fibronectin and vitronectin. Antibody 96.2C1 recognizes the CD41a molecule of about 140 kd (1).

References: 1)Leukocyte Typing III (A.J. McMichael, et al, eds.) Oxford University Press, Oxford, (1987) p. 744.

2)Leukocyte Typing VI (T. Kishimoto, et al, eds.) Garland Publishing, Inc., New York (1997) p. 643-648.

STORAGE CONDITIONS: *Store at 2 - 5°C. Do not freeze! Protect from light.*

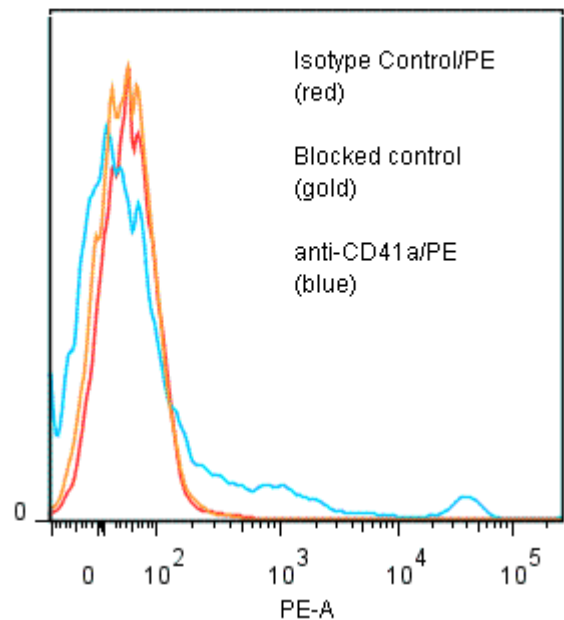
PRODUCT STABILITY: Product should retain activity for at least 12 months after shipping date when stored as recommended. Ship Date: _____

BUFFER: 50 mM Sodium Phosphate pH 7.5, 500 mM Potassium Chloride, 150mM NaCl, 15% Glycerol, 0.2% BSA, 0.04% NaN₃ (as a preservative).

PRODUCTION: Protein A purified antibody from tissue culture supernatant was conjugated to R-Phycoerythrin through a sulfo-ester linkage. Unconjugated antibody was removed using size exclusion chromatography. Antibody conjugate is at **0.5 mg/ml** with an A₅₆₅/A₂₈₀ ratio of 2.88.

PERFORMANCE: Five x 10⁵ ficoll prepared human peripheral blood mononuclear cells were washed and pre incubated 5 minutes with 20µl of 250µg/ml human IgG (to block nonspecific binding) after which they were incubated 45 minutes on ice with 80 µl of anti-CD41a/R-PE at a dilution factor of **1:50** (10µg/ml). Cells were washed three times, fixed and analyzed by FACS. A net **10.2%** sub population of the cells stained positive with a mean shift of **2.4 log₁₀** fluorescent units when compared to a Mouse IgG1/R-PE negative control (Catalog # 278-050) at a similar concentration. Binding was blocked when cells were pre incubated 10 minutes with 20 µl of 0.5 mg/ml anti-CD41a antibody (Catalog #190-020).

Binding of anti-CD41a/PE to human PBL



* *Research Use Only. Not for use in Diagnostic procedures.*