

PERFORMANCE DATA SHEET

2216

Monoclonal anti-human CD40*

mAb name/Clone: BE-1

Isotype: Mouse IgG1

Immunogen: Murine L cells transfectants expressing human CD40

CATALOG#: 189-820 (Preservative Free)

QUANTITY: 100 µg

CONCENTRATION: 1.0 mg/ml

INFORMATION: Human CD40 is a member of the tumor necrosis factor (TNF) receptor family and is present on all B cells except plasma cells. CD40 is also found on some epithelial cells, carcinomas and lymphoid dendritic cells. CD40 plays an important role in B cell activation and the interaction with its ligand CD154 (CD40 Ligand) is essential for isotype switching (1). The CD40-CD154 interaction appears to have a role in atherosclerosis and cardiovascular disorders (3,4,5). Antibody BE-1 recognizes the CD40 molecule of about 44 kd. Binding of cross linked BE-1 will partially activate B cells.

REFERENCES: 1) T.A. Foy, et al, (1996) *Annu Rev Immunol* 14: 591-617. 2) M.E. Ozaki, et al, (1997) *J Immunol* 159: 214-221. 3) F. Mach, et al, (1997) *Proc Natl Acad Sci USA* 94:1931-1936. 4) U. Schonbeck, et al, (2000) *PNAS USA* 97: 7458-7463. 5) U. Schonbeck, et al, (2001) *Circulation* 104: 2266-2268.

STORAGE CONDITIONS: Store at 2 - 5°C. Open under aseptic conditions. Freeze/Thawing is not recommended.

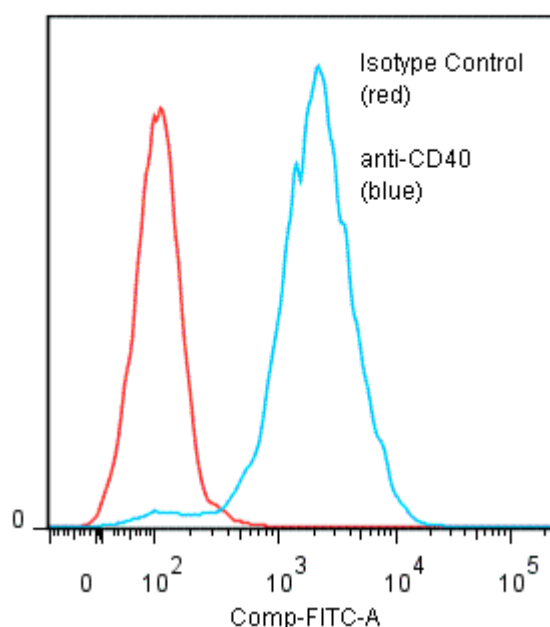
PRODUCT STABILITY: Product should retain activity for at least 12 months after shipping date when stored as recommended. Ship Date: _____

BUFFER: 50 mM Sodium Phosphate pH 7.5, 100 mM Potassium Chloride, 150mM NaCl.

PRODUCTION: Antibody was Protein A purified from (low FBS containing) tissue culture supernatant. Purity was >95% Immunoglobulin by SDS-PAGE and contains less than 1% Bovine Immunoglobulin. Product was 0.2 µm filtered and vialled under aseptic conditions.

PERFORMANCE: Five x 10⁵ cultured **Raji** cells per tube were incubated 45 minutes on ice with 80 µl of anti-CD40 antibody at 10 µg/ml. Cells were washed twice and incubated with 2^o reagent Goat anti-Mouse IgG/FITC (Catalog #232-011), after which they were washed three times, fixed and analyzed by FACS. Cells stained positive with a mean shift of 1.36 log₁₀ fluorescent units when compared to a Mouse IgG1 negative control (Catalog #278-010) at a similar concentration.

Binding of anti-CD40 mAb +GAM/FITC to human Raji cells



*Research use only. Not for use in Diagnostic procedures.