

PERFORMANCE DATA SHEET

3035

Monoclonal anti-human CD38*

mAb name/Clone: AT1

Isotype: Mouse IgG1 κ

Immunogen: Human T cell tumor cells: CEM

CATALOG#: 187-820 (Preservative Free)

QUANTITY: 100 μ g

CONCENTRATION: 1.0 mg/ml

INFORMATION: Human CD38 is a type II transmembrane glycoprotein with bifunctional ectoenzyme activity catalyzing both synthesis and hydrolysis of cyclic ADP ribose (1). CD38 is involved in lymphocyte activation and adhesion to endothelium and has recently been identified as a counter-receptor of CD31 (2). Antibody AT1 recognizes the CD38 molecule of 45 kd.

References: 1.) Leukocyte Typing VI (T. Kishimoto, et al, eds.) Garland Publishing, Inc., New York (1997) p. 151-157.
2.) S. Deaglio, et al, (1998) J Immunol 160:395-402.

STORAGE CONDITIONS: Store at 2 - 5°C. Open under aseptic conditions. Freeze/Thawing is not recommended.

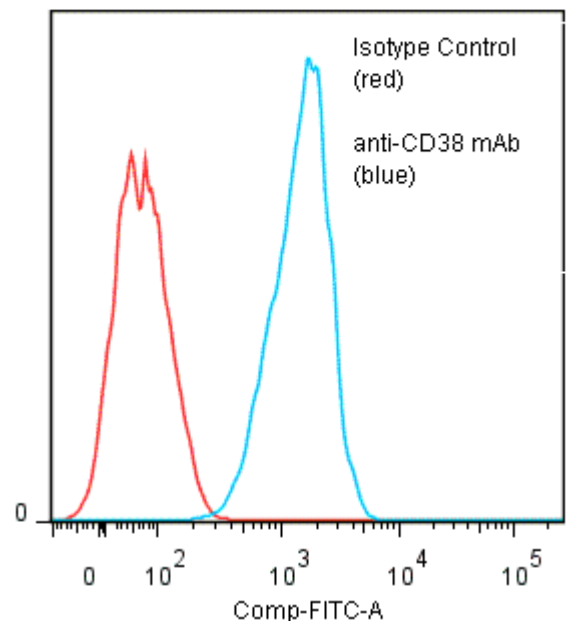
PRODUCT STABILITY: Product should retain activity for at least 12 months after shipping date when stored as recommended. Ship Date: _____

BUFFER: 50 mM Sodium Phosphate pH 7.5, 100 mM Potassium Chloride, 150mM NaCl.

PRODUCTION: Antibody was Protein A purified from (low FBS containing) tissue culture supernatant. Purity was >95% Immunoglobulin by SDS-PAGE and contains less than 1% Bovine Immunoglobulin. Product was 0.2 μ m filtered and vialled under aseptic conditions.

PERFORMANCE: Five x 10⁵ cultured **Raji** cells per tube were washed and incubated 45 minutes on ice with 80 μ l of anti-CD38 antibody at 5 μ g/ml. Cells were washed twice and incubated with 2^o reagent Goat anti-Mouse IgG/FITC (Catalog #232-011), after which they were washed three times, fixed and analyzed by FACS. Cells stained positive with a mean shift of 1.34 log₁₀ fluorescent units when compared to a Mouse IgG1 negative control (Catalog #278-010).

Binding of anti-CD38 mAb +GAM/FITC to human Raji cells



* *Research Use Only. Not for use in Diagnostic procedures..*