

PERFORMANCE DATA SHEET

2734

Monoclonal anti-human CD38/APC**mAb name/Clone:* AT1*Isotype:* Mouse IgG1 κ *Immunogen:* Human T cell tumor cells: CEM**CATALOG#:** 187-060**QUANTITY:** 120 tests**VOLUME IN VIAL:** 0.2 ml**WORKING DILUTION:** 1:50 (or use 1.6 μ l of concentrated stock per 5 x 10⁵-cell test)

INFORMATION: Human CD38 is a type II transmembrane glycoprotein with bifunctional ectoenzyme activity catalyzing both synthesis and hydrolysis of cyclic ADP ribose (1). CD38 is involved in lymphocyte activation and adhesion to endothelium and has recently been identified as a counter-receptor of CD31 (2). Antibody AT1 recognizes the CD38 molecule of 45 kd.

References: 1.) Leukocyte Typing VI (T. Kishimoto, et al, eds.) Garland Publishing, Inc., New York (1997) p. 151-157.
2.) S. Deaglio, et al, (1998) J Immunol 160:395-402.

STORAGE CONDITIONS: Store at 2 - 5°C. Do not freeze! Protect from light.

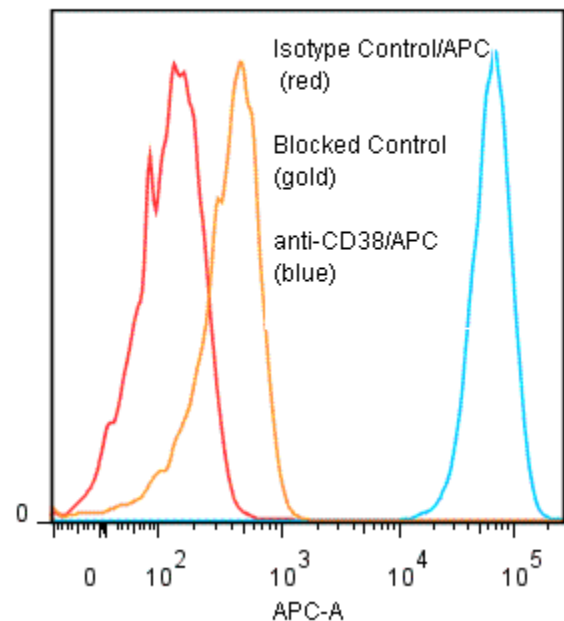
PRODUCT STABILITY: Product should retain activity for at least 12 months after shipping date when stored as recommended. Ship Date: _____

BUFFER: 50 mM Sodium Phosphate pH 7.5, 500 mM Potassium Chloride, 150mM NaCl, 15% Glycerol, 0.2% BSA, 0.04% NaN₃ (as a preservative).

PRODUCTION: Protein A purified antibody from tissue culture supernatant was conjugated to cross-linked Allophycocyanin through a sulfo-ester linkage. Unconjugated antibody was removed using size exclusion chromatography. Antibody conjugate is at approximately 0.5 mg/ml with an A₆₅₀/A₂₈₀ ratio of 2.06.

PERFORMANCE: Human **Raji** cells were incubated 45 minutes on ice with 80 μ l of anti-CD38/APC at a 1:50 dilution (10 μ g/ml). Cells were washed three times, fixed and analyzed by FACS. Cells stained positive with a mean shift of 2.63 log₁₀ fluorescent units when compared to a Mouse IgG1/APC Isotype control (Catalog #278-060). Binding was blocked when cells were pre incubated with 20 ul of unlabeled 0.5 mg/ml anti-CD38 antibody (Cat# 187-020).

Binding of anti-CD38/APC to human Raji cells



* *Research Use Only. Not for use in Diagnostic procedures.*