

**PERFORMANCE DATA SHEET**

2133

**Monoclonal anti-human CD37/FITC\***

**mAb name/Clone:** IPO-24

**Isotype:** Mouse IgG2bκ

**Immunogen:** Human spleen cells from a patient with hairy cell leukemia

**CATALOG#:** 186-040

**QUANTITY:** 120 tests

**VOLUME IN VIAL:** 0.2 ml

**WORKING DILUTION:** 1:50 (or use 1.6µl of concentrated stock per 5 x 10<sup>5</sup>-cell test)

**INFORMATION:** Human CD37 is a member of the tetraspan family of cell surface molecules that apparently are involved in signal transduction or transporter system complexes. CD37 is strongly expressed on B lymphocytes (sIg-positive) and weakly on T cells, neutrophils and monocytes. Expression of CD37 disappears during B cell development at the plasma cell stage. IPO-24 recognizes the CD37 molecule of about 42-52 kd (4).

**References:** 1) Leukocyte Typing V (S.F. Schlossman, et al, eds.) Oxford University Press, Oxford, (1995) p. 544-545.  
2) Leukocyte Typing VI (T. Kishimoto, et al, eds.) Garland Publishing, Inc., New York (1997) p. 149-151.

**STORAGE CONDITIONS:** Store at 2 - 5°C. Freeze/Thawing is not recommended. Protect from light.

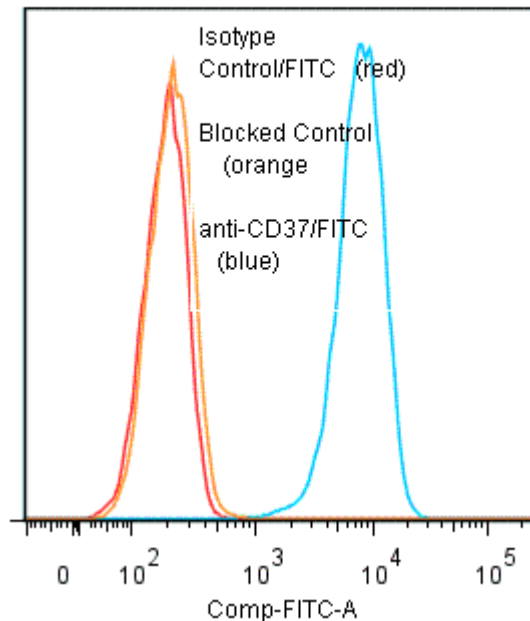
**PRODUCT STABILITY:** Product should retain activity for at least 12 months after shipping date when stored as recommended. Ship Date:\_\_\_\_\_

**BUFFER:** 50 mM Sodium Phosphate pH 7.5, 100 mM Potassium Chloride, 150mM NaCl, 5% Glycerol, 0.2% BSA, 0.04% NaN<sub>3</sub> (as a preservative).

**PRODUCTION:** Protein A purified antibody from tissue culture supernatant was reacted with FITC. Unconjugated FITC was separated from antibody/FITC conjugate by desalting column. The antibody/FITC conjugate is at 0.5 mg/ml with a Fluorescein/Antibody molar ratio of 12.7.

**PERFORMANCE:** Five x 10<sup>5</sup> cultured human Raji cells per tube were washed and incubated 45 minutes on ice with 80 µl of anti-CD37/FITC at a 1:50 dilution (10mg/ml). They were washed three times, fixed and analyzed by FACS. Cells stained positive with a mean shift of 1.61 log<sub>10</sub> fluorescent units when compared to a Mouse IgG2b/FITC negative control (Catalog # 284-040) at a similar concentration. Binding was blocked when cells were pre incubated 10 minutes with 20 µl of 0.5 mg/ml anti-CD37 antibody (Catalog #186-020).

**Binding of anti-CD37/FITC to human Raji cells**



\* *Research Use Only. Not for use in Diagnostic procedures.*