

## PERFORMANCE DATA SHEET

1830

# Monoclonal anti-human CD36\*

**mAb name/Clone:** SMO

**Isotype:** Mouse IgM

**Immunogen:** Human tonsil cells/PBM

**CATALOG#:** 185-820 (Preservative Free)

**QUANTITY:** 100 µg

**CONCENTRATION:** 1.0 mg/ml

**INFORMATION:** Human CD36 is a major platelet glycoprotein also found on monocytes, macrophages and some endothelial cells. CD36 may play a role in cell adhesion as a receptor for thrombospondin. CD36 is a receptor for adhesion of malaria infected erythrocytes. CD36 is also reported to have a role in phagocytosis. Antibody SMO recognizes the CD36 molecule of 88 kd.

**References:** N. Hogg, et al, (1984) Immunology **53**: 753-767. P. Oquendo, et al, (1989) Cell **58**: 95-101. Leukocyte Typing V (S.F. Schlossman, et al, eds.) Oxford University Press, Oxford, (1995) p. 1269-1289. Y. Ren, et al, (1995) J Exp Med **181**: 1857-1862.

**STORAGE CONDITIONS:** Store at 2 - 5°C. Open under aseptic conditions. Do not Freeze!

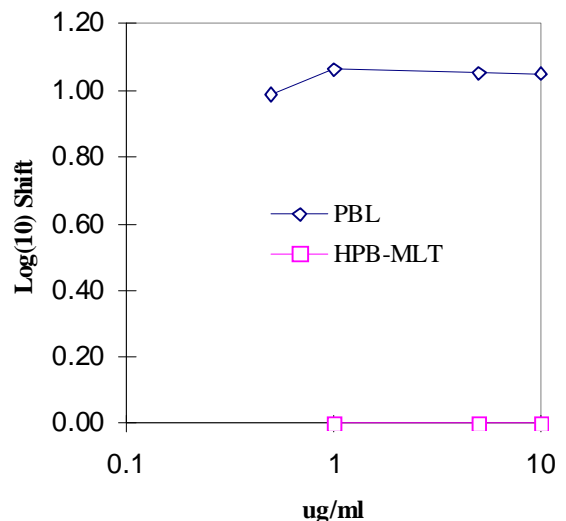
**PRODUCT STABILITY:** Product should retain activity for at least 12 months after shipping date when stored as recommended. Ship Date: \_\_\_\_\_

**BUFFER:** 50 mM Sodium Phosphate pH 7.5, 500 mM Potassium Chloride, 150mM NaCl.

**PRODUCTION:** Antibody from (low FBS containing) tissue culture supernatant was purified to 95% mouse immunoglobulin by SDS-PAGE (<1% bovine immunoglobulin) using size exclusion chromatography. Product was 0.2 µm filtered and vialled under aseptic conditions.

**PERFORMANCE:** Five x 10<sup>5</sup> ficoll prepared human peripheral blood mononuclear cells were washed and pre incubated 5 minutes with 20 µl of 250 µg/ml human IgG (to block non specific binding) after which they were incubated 45 minutes on ice with 80µl of anti-CD36 antibody at a concentration of 5 µg/ml. Cells were washed twice and incubated with 2<sup>o</sup> reagent Goat anti-Mouse Ig/FITC (Catalog #232-011), after which they were washed three times, fixed and analyzed by FACS. A net 16% sub population of the cells stained positive with a mean shift of 1.05 log<sub>10</sub> fluorescent units when compared to a Mouse IgM negative control (Catalog #290-010) at a similar concentration.

Binding of anti-CD36 antibody to human cell types



\*This Product is intended for Laboratory Research use only.