

PERFORMANCE DATA SHEET

1817

Monoclonal anti-human CD36*

mAb name/Clone: SMO

Isotype: Mouse IgM

Immunogen: Human tonsil cells/PBM

CATALOG#: 185-020

QUANTITY: 100 µg

CONCENTRATION: 1.0 mg/ml

INFORMATION: Human CD36 is a major platelet glycoprotein also found on monocytes, macrophages and some endothelial cells. CD36 may play a role in cell adhesion as a receptor for thrombospondin. CD36 is a receptor for adhesion of malaria infected erythrocytes. CD36 is also reported to have a role in phagocytosis. Antibody SMO recognizes the CD36 molecule of 88 kd.

References: N. Hogg, et al, (1984) Immunology **53**: 753-767. P. Oquendo, et al, (1989) Cell **58**: 95-101. Leukocyte Typing V (S.F. Schlossman, et al, eds.) Oxford University Press, Oxford, (1995) p. 1269-1289. Y. Ren, et al, (1995) J Exp Med **181**: 1857-1862.

STORAGE CONDITIONS: Store at 2 - 5°C. Do not Freeze!

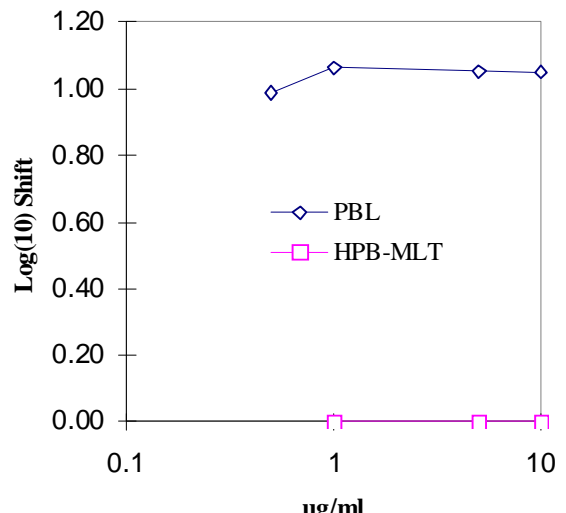
PRODUCT STABILITY: Product should retain activity for at least 12 months after shipping date when stored as recommended. Ship Date: _____

BUFFER: 50 mM Sodium Phosphate pH 7.5, 500 mM Potassium Chloride, 150mM NaCl, 0.5 mg/ml Gentamicin Sulfate (as a preservative).

PRODUCTION: Antibody from (low FBS containing) tissue culture supernatant was purified to 95% mouse immunoglobulin by SDS-PAGE (<1% bovine immunoglobulin) using size exclusion chromatography.

PERFORMANCE: Five x 10⁵ ficoll prepared **human peripheral blood mononuclear cells** were washed and pre incubated 5 minutes with 20 µl of 250 µg/ml human IgG (to block non specific binding) after which they were incubated 45 minutes on ice with 80µl of anti-CD36 antibody at a concentration of **5 µg/ml**. Cells were washed twice and incubated with 2^o reagent Goat anti-Mouse Ig/FITC (Catalog #232-011), after which they were washed three times, fixed and analyzed by FACS. A net **16%** sub population of the cells stained positive with a mean shift of **1.05 log₁₀** fluorescent units when compared to a Mouse IgM negative control (Catalog #290-010) at a similar concentration.

Binding of anti-CD36 antibody to human cell types



**This Product is intended for Laboratory Research use only.*