

# PERFORMANCE DATA SHEET

2024

## Monoclonal anti-human CD35 (CR1, C3bR)\*

**mAb name/Clone:** E11

**Isotype:** Mouse IgG1

**Immunogen:** Human Monocytes

**CATALOG#:** 184-820 (Preservative Free)

**QUANTITY:** 100 µg

**CONCENTRATION:** 1.0 mg/ml

**INFORMATION:** Human CD35 binds complement components C3b, C4b, and iC3b and is expressed on erythrocytes, B cells, monocytes, granulocytes and follicular dendritic cells and on subsets of thymocytes. CD35 on erythrocytes mediates clearance of immune complexes. Antibody E11 recognizes a complement receptor 1 (CD35) molecule of about 220 kd.

**References:** N. Hogg, et al, (1984) Eur J Immunol **14**: 236-243. Leukocyte Typing IV (W. Knapp, et al, eds.) Oxford University Press, Oxford, (1989) p. 829-830. C.C. Delibrias, et al, (1994) Eur J Immunol **24**: 2784-2788. Leukocyte Typing V (S.F. Schlossman, et al, eds.) Oxford University Press, Oxford, (1995) p. 871-874.

**STORAGE CONDITIONS:** Store at 2 - 5°C. Freeze/Thawing is not recommended. Open under aseptic conditions.

**PRODUCT STABILITY:** Product should retain activity for at least 12 months after shipping date when stored as recommended. Ship Date: \_\_\_\_\_

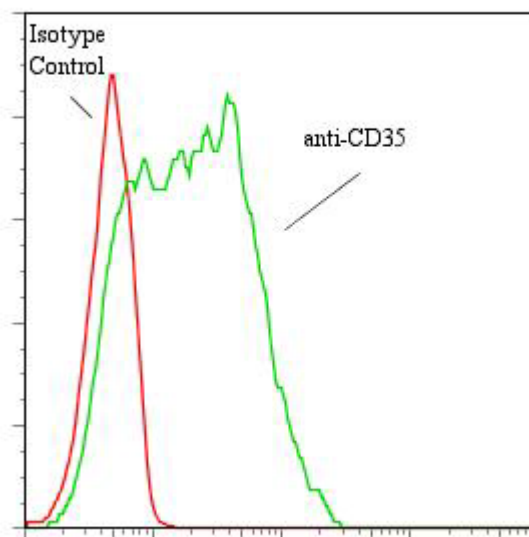
**BUFFER:** 50 mM Sodium Phosphate pH 7.5, 100 mM Potassium Chloride, 150mM NaCl.

**PRODUCTION:** Antibody was Protein A purified from (low FBS containing) tissue culture supernatant. Purity was >95% Immunoglobulin by SDS-PAGE and contains less than 1% Bovine Immunoglobulin. Product was 0.2µ sterile filtered and vialled under aseptic conditions.

**PRODUCTION:** Antibody was Protein A purified from (low FBS containing) tissue culture supernatant. Purity was >95% Immunoglobulin by SDS-PAGE with less than 1% Bovine Immunoglobulin.

**PERFORMANCE:** Five x 10<sup>5</sup> cultured HPB-MLT human tumor cells were washed and pre incubated 5 minutes with 20 µl of 250µg/ml human IgG (to block non specific binding) after which they were incubated 45 minutes on ice with 80 µl of anti-CD35 antibody at a concentration of 10 µg/ml. Cells were washed twice and incubated with 2<sup>o</sup> reagent Goat anti-Mouse IgG/FITC (Catalog #232-011), after which they were washed three times, fixed and analyzed by FACS. Cells stained positive with a mean shift of 0.70 log<sub>10</sub> fluorescent units when compared to a Mouse IgG1 negative control (Catalog #278-010) at a similar concentration.

**Binding of anti-CD35 antibody to human HPB-MLT cells**



\* Research Use Only. Not for use in Diagnostic procedures.