

PERFORMANCE DATA SHEET

2146

Monoclonal anti-human CD35 (CR1, C3bR)* / FITC*

mAb name/Clone: E11

Isotype: Mouse IgG1

Immunogen: Human monocytes

CATALOG#: 184-040

QUANTITY: 120 tests

VOLUME IN VIAL: 200 µl

WORKING DILUTION: 1:50 (or use 1.6µl of concentrated stock per 5 x 10⁵-cell test)

INFORMATION: Human CD35 binds complement components C3b, C4b, and iC3b and is expressed on erythrocytes, B cells, monocytes, granulocytes and follicular dendritic cells and on subsets of thymocytes (3). CD35 on erythrocytes mediates clearance of immune complexes. Antibody E11 recognizes a complement receptor 1 (CD35) molecule of about 220 kd.

References: N. Hogg, et al, (1984) Eur J Immunol **14**: 236-243. Leukocyte Typing IV (W. Knapp, et al, eds.) Oxford University Press, Oxford, (1989) p. 829-830. C.C. Delibrias, et al, (1994) Eur J Immunol **24**: 2784-2788. Leukocyte Typing V (S.F. Schlossman, et al, eds.) Oxford University Press, Oxford, (1995) p. 871-874.

STORAGE CONDITIONS: Store at 2 - 5°C. Freeze/Thawing is not recommended. Protect from light.

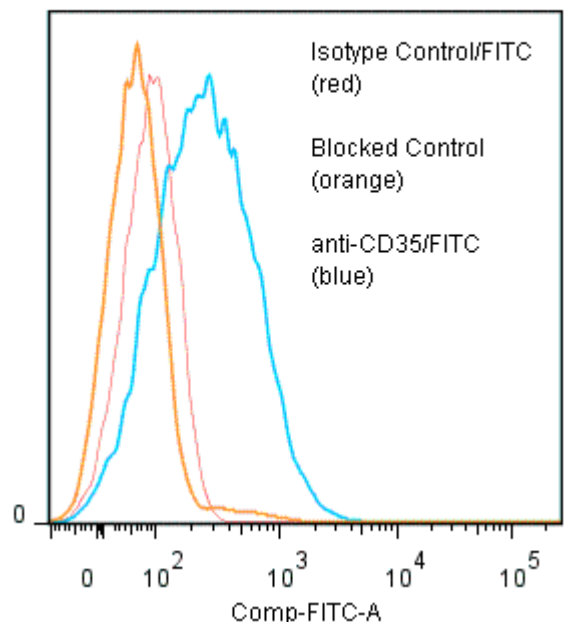
PRODUCT STABILITY: Product should retain activity for at least 12 months after shipping date when stored as recommended. Ship Date: _____

BUFFER: 50 mM Sodium Phosphate pH 7.5, 100 mM Potassium Chloride, 150mM NaCl, 5% Glycerol, 0.2% BSA, 0.04% NaN₃ (as a preservative).

PRODUCTION: Protein A purified antibody from tissue culture supernatant was reacted with FITC. Unconjugated FITC was separated from antibody/FITC conjugate by desalting column. The antibody/FITC conjugate is at 0.5 mg/ml with a Fluorescein/IgG molar ratio of 7.9.

PERFORMANCE: Five x 10⁵ cultured HPB-MLT cells were washed and incubated 45 minutes on ice with 80 µl of anti-CD35/FITC at a 1:50 dilution (10 µg/ml). Cells were washed three times, fixed and analyzed by FACS. Cells stained positive with a mean shift of 0.59 log₁₀ fluorescent units when compared to a Mouse IgG1/FITC negative control (Catalog #278-040) at a similar concentration. Binding was blocked when cells were pre incubated with 20 µl of anti-CD35 antibody (Catalog #184-020) at 0.5 mg/ml.

Binding of anti-CD35/FITC to human HPB-MLT cells



**Research use only. Not for use in Diagnostic procedures.*