

PERFORMANCE DATA SHEET

2227

*Monoclonal anti-human CD35/Biotin**

mAb name/Clone: E11

Isotype: Mouse IgG1

Immunogen: Human monocytes

CATALOG#: 184-030

QUANTITY: 100 µg

CONCENTRATION: 1.0 mg/ml

INFORMATION: Human CD35 binds complement components C3b, C4b, and iC3b and is expressed on erythrocytes, B cells, monocytes, granulocytes and follicular dendritic cells and on subsets of thymocytes (3). CD35 on erythrocytes mediates clearance of immune complexes. Antibody E11 recognizes a complement receptor 1 (CD35) molecule of about 220 kd.

References: N. Hogg, et al, (1984) Eur J Immunol **14**: 236-243. Leukocyte Typing IV (W. Knapp, et al, eds.) Oxford University Press, Oxford, (1989) p. 829-830. C.C. Delibrias, et al, (1994) Eur J Immunol **24**: 2784-2788. Leukocyte Typing V (S.F. Schlossman, et al, eds.) Oxford University Press, Oxford, (1995) p. 871-874.

STORAGE CONDITIONS: Store at 2 - 5°C. Freeze/thawing not recommended.

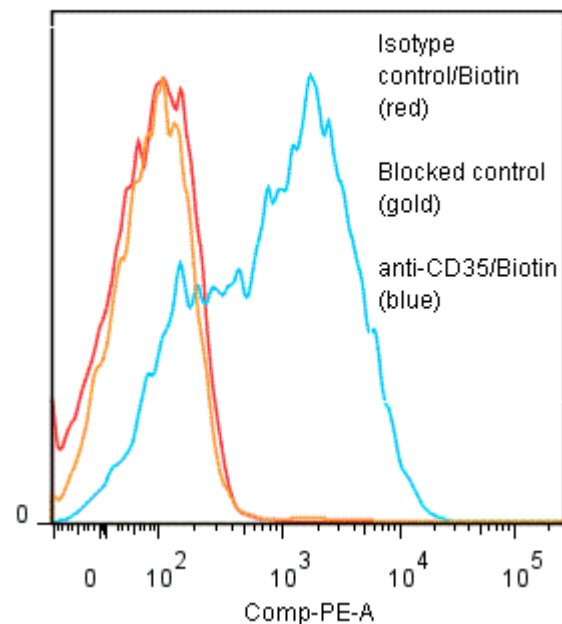
PRODUCT STABILITY: Product should retain activity for at least 12 months after shipping date when stored as recommended. Ship Date: _____

BUFFER: 50 mM Sodium Phosphate pH 7.5, 100 mM Potassium Chloride, 150mM NaCl, 5% Glycerol, 0.2% BSA, 0.04% Na₃N (as a preservative).

PRODUCTION: Antibody from (low FBS containing) tissue culture supernatant was Protein A purified to >95% mouse immunoglobulin by SDS-PAGE (<1% bovine immunoglobulin), and reacted with NHS-Biotin. Unconjugated Biotin was removed from conjugate using a desalting column.

PERFORMANCE: Five x 10⁵ cultured HPB-MLT cells were washed and incubated 45 minutes on ice with 80 µl of product at 10 µg/ml. Cells were then washed twice and incubated 45 minutes with 2^o reagent as described above, after which they were washed three times, fixed and analyzed by FACS. Cells stained positive with a mean shift of 1.28 log₁₀ fluorescent units when compared to a Mouse IgG1/Biotin negative control (Catalog #278-030) at a similar concentration. Binding was blocked when cells were pre incubated 10 minutes with 20 µl of 0.5 mg/ml anti-CD35 antibody (Catalog #184-020).

Binding of anti-CD35/Biotin +SA/PE to human HPB-MLT cells



* **Research Use Only. Not for use in Diagnostic procedures.**