

PERFORMANCE DATA SHEET

1816

Monoclonal anti-human CD35 (CR1, C3bR)*

mAb name/Clone: E11

Isotype: Mouse IgG1

Immunogen: Human Monocytes

CATALOG#: 184-020

QUANTITY: 100 µg

CONCENTRATION: 1.0 mg/ml

INFORMATION: Human CD35 binds complement components C3b, C4b, and iC3b and is expressed on erythrocytes, B cells, monocytes, granulocytes and follicular dendritic cells and on subsets of thymocytes. CD35 on erythrocytes mediates clearance of immune complexes. Antibody E11 recognizes a complement receptor 1 (CD35) molecule of about 220 kd.

References: N. Hogg, et al, (1984) Eur J Immunol **14**: 236-243. Leukocyte Typing IV (W. Knapp, et al, eds.) Oxford University Press, Oxford, (1989) p. 829-830. C.C. Delibrias, et al, (1994) Eur J Immunol **24**: 2784-2788. Leukocyte Typing V (S.F. Schlossman, et al, eds.) Oxford University Press, Oxford, (1995) p. 871-874.

STORAGE CONDITIONS: Store at 2 - 5°C. Freeze/Thawing is not recommended.

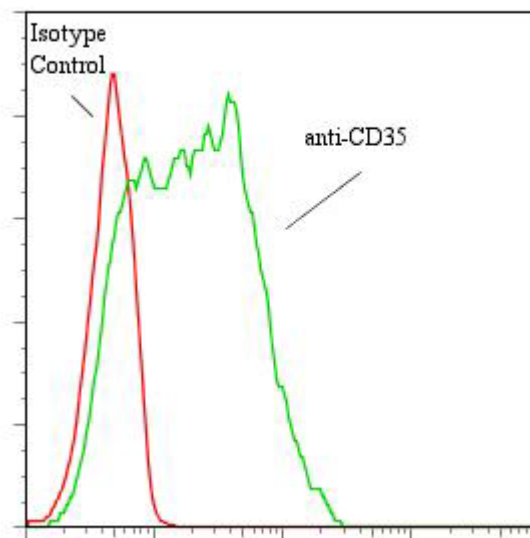
PRODUCT STABILITY: Product should retain activity for at least 12 months after shipping date when stored as recommended. Ship Date: _____

BUFFER: 50 mM Sodium Phosphate pH 7.5, 100 mM Potassium Chloride, 150mM NaCl, 0.5 mg/ml Gentamicin Sulfate (as a preservative).

PRODUCTION: Antibody was Protein A purified from (low FBS containing) tissue culture supernatant. Purity was >95% Immunoglobulin by SDS-PAGE and contains less than 1% Bovine Immunoglobulin.

PERFORMANCE: Five x 10⁵ cultured U-937 human tumor cells were washed and pre incubated 5 minutes with 20 µl of 250µg/ml human IgG (to block non specific binding) after which they were incubated 45 minutes on ice with 80 µl of anti-CD35 antibody at a concentration of 10 µg/ml. Cells were washed twice and incubated with 2^o reagent Goat anti-Mouse IgG/FITC (Catalog #232-011), after which they were washed three times, fixed and analyzed by FACS. Cells stained positive with a mean shift of 0.70 log₁₀ fluorescent units when compared to a Mouse IgG1 negative control (Catalog #278-010) at a similar concentration.

Binding of anti-CD35 antibody to human HPB-MLT cells



***Research use only. Not for use in Diagnostic procedures.**