

PERFORMANCE DATA SHEET

3330

Monoclonal anti-human CD34/FITC*

mAb name/Clone: 43A1

Isotype: Mouse IgG3κ

Immunogen: Human KG-1a tumor cells

CATALOG#: 183-040

QUANTITY: 120 tests

VOLUME IN VIAL: 0.2ml

WORKING DILUTION: 1:50 (or use 1.6µl of concentrated stock per 5×10^5 -cell test)

INFORMATION: Human CD34 is an unusual glycosylated membrane protein exclusively expressed on immature hematopoietic cells and on endothelial cells. CD34 may have a role in cell adhesion. CD34 has extensive utility for bone marrow transplantation. Antibody 43A1 recognizes a class 2 epitope of the 110 kd CD34 molecule.

References: H.J. Bühring, et al, (1991) Leukemia **5**: 854-860. Leukocyte Typing V (S.F. Schlossman, et al, eds.) Oxford University Press, Oxford, (1995) p. 840-874. R.H. Collins, (1994) Stem Cells **12**: 577-585. T.L. Holyoake & M.J. Alcorn, (1994) Blood Reviews **8**: 113-124.

STORAGE CONDITIONS: Store at 2 - 5°C. **Freeze/Thawing is not recommended. Protect from light.**

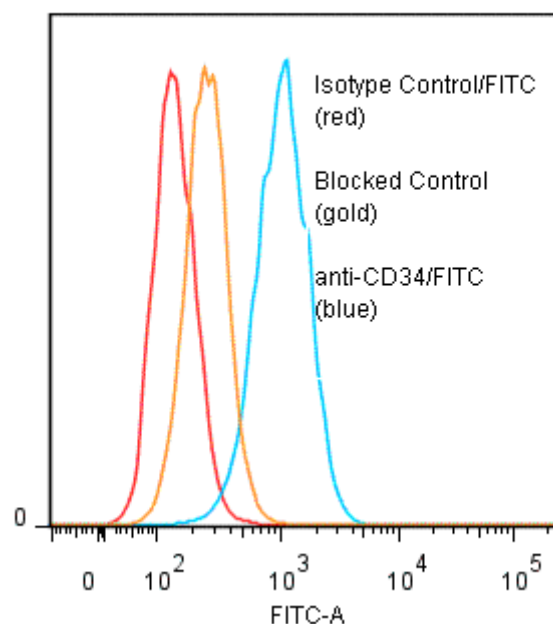
PRODUCT STABILITY: Product should retain activity for at least 12 months after shipping date when stored as recommended. Ship Date:_____

BUFFER: 50 mM Sodium Phosphate pH 7.5, 100 mM Potassium Chloride, 150mM NaCl, 5% Glycerol, 0.2% BSA, 0.04% NaN₃ (as a preservative).

PRODUCTION: Protein A purified antibody from tissue culture supernatant was reacted with FITC. Unconjugated FITC was separated from antibody/FITC conjugate by desalting column. The antibody/FITC conjugate is at **0.5 mg/ml** with a Fluorescein/IgG molar ratio of 8.6.

PERFORMANCE: Five $\times 10^5$ cultured human **KG-1a** cells per tube were washed and pre incubated ~5 minutes with 20 µl of 250 µg/ml human IgG (to block non specific binding) after which they were incubated 45 minutes on ice with 80 µl of anti-CD34/FITC at a **1:50** dilution (10 µg/ml). Cells were washed three times, fixed and analyzed by FACS. Cells stained positive with a mean shift of **0.92** log₁₀ fluorescent units when compared to a Mouse IgG3/FITC negative control (Catalog #287-040). Binding was blocked when cells were pre incubated 10 minutes with 20 µl of 0.5 mg/ml anti-CD34 antibody (Catalog #183-020).

Binding of anti-CD34/FITC to human KG1a cells



* **Research Use Only. Not for use in Diagnostic procedures.**