

PERFORMANCE DATA SHEET

1851

Monoclonal anti-human CD32(Fc gamma RII) Fab

mAb name/Clone: 7.3

Isotype: Mouse IgG1κ

Immunogen: Human K562 tumor cells and L cells transfected with human Fc gamma RII

CATALOG#: 181-580

QUANTITY: 100 µg

CONCENTRATION: 1.0 mg/ml

INFORMATION: Human CD32 exists in at least six isoforms originating from three different genes (FcγRII A, B and C). The CD32 molecule is a low affinity receptor for immune complexed IgG and has signal-transducing capabilities involved with humoral and cell-mediated immune responses. Antibody 7.3 reacts with a domain 2 epitope or all CD32 isoforms. Intact and Fab’₂ 7.3 antibody blocks immune complex binding.

References: Leukocyte Typing V (S.F. Schlossman, et al, eds.) Oxford University Press, Oxford (1995) p. 823-836.

STORAGE CONDITIONS: *Store at 2 - 5°C. Open under aseptic conditions.* Freeze/Thawing is not recommended.

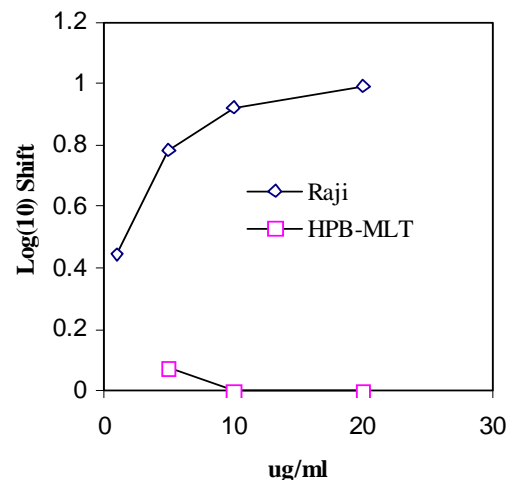
PRODUCT STABILITY: Product should retain activity for at least 12 months after shipping date when stored as recommended. Ship Date: _____

BUFFER: 50 mM Sodium Phosphate pH 7.5, 100 mM Potassium Chloride, 150mM NaCl. Product was sterile filtered and vialled under aseptic conditions. **No preservative added.**

PRODUCTION: Antibody was Protein A purified from (low FBS containing) tissue culture supernatant. Immunoglobulin was enzymatically cleaved using Immobilized Ficin. Fab was separated from intact antibody and Fc fragments by Protein A and Size exclusion chromatography. No intact antibody was observed by SDS-PAGE.

PERFORMANCE: Five x 10⁵ cultured human **Raji** cells were washed and incubated 45 minutes on ice with 80 µl of anti-CD32 Fab at **5 µg/ml**. Cells were washed twice and incubated with 2^o reagent Goat anti-Mouse IgG/FITC (Catalog #232-011), after which they were washed three times, fixed and analyzed by FACS. Cells stained positive with a mean shift of **0.9 log₁₀** fluorescent units when compared to a Mouse IgG1 negative control (Catalog #278-010) at a similar concentration.

Binding of anti-CD32 Fab to human cell lines



**This Product is intended for Laboratory Research use only.*