

**PERFORMANCE DATA SHEET**

2040

**Monoclonal anti-human CD32(Fc gamma RII) F(ab')<sub>2</sub>\***

**mAb name/Clone:** 7.3

**Isotype:** Mouse IgG1κ

**Immunogen:** Human K562 tumor cells and L cells transfected with human Fc gamma RII

**CATALOG#:** 181-520

**QUANTITY:** 100 µg

**CONCENTRATION:** 1.0 mg/ml

**INFORMATION:** Human CD32 exists in at least six isoforms originating from three different genes (FcγRII A, B and C). The CD32 molecule is a low affinity receptor for immune complexed IgG and has signal-transducing capabilities involved with humoral and cell-mediated immune responses. Antibody 7.3 reacts with a domain 2 epitope or all CD32 isoforms. Intact and Fab'₂ 7.3 antibody blocks immune complex binding.

**References:** Leukocyte Typing V (S.F. Schlossman, et al, eds.) Oxford University Press, Oxford (1995) p. 823-836. A. Aicher, et al, (2000) J Immunol 164: 4689-4696.

**STORAGE CONDITIONS:** Store at 2 - 5°C. Open under aseptic conditions. Freeze/Thawing is not recommended.

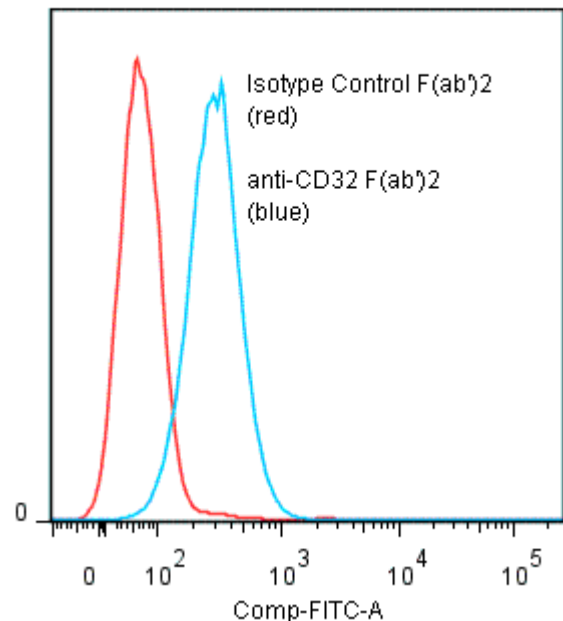
**PRODUCT STABILITY:** Product should retain activity for at least 12 months after shipping date when stored as recommended. Ship Date: \_\_\_\_\_

**BUFFER:** 50 mM Sodium Phosphate pH 7.5, 100 mM Potassium Chloride, 150mM NaCl. Product was sterile filtered and vialled under aseptic conditions. **No preservative added.**

**PRODUCTION:** Antibody was Protein A purified from (low FBS containing) tissue culture supernatant. Immunoglobulin was enzymatically cleaved using Immobilized Ficin. F(ab')₂ was separated from intact antibody and Fc fragments by Protein A and Size exclusion chromatography. Purity was >90% F(ab')₂ by SDS-PAGE with no intact Ig visible.

**PERFORMANCE:** Five x 10<sup>5</sup> cultured human **Raji** cells were washed and incubated 45 minutes on ice with 80 µl of anti-CD32 F(ab')₂ at **10 µg/ml**. Cells were washed twice and incubated with 2<sup>o</sup> reagent Goat anti-Mouse IgG/FITC (Catalog #232-011), after which they were washed three times, fixed and analyzed by FACS. Cells stained positive with a mean shift of **0.62 log<sub>10</sub>** fluorescent units when compared to a Mouse IgG1 negative control (Catalog #278-010) at a similar concentration.

**Binding of anti-CD32 F(ab')<sub>2</sub> + GAM/FITC to human Raji cells**



\* **Research Use Only. Not for use in Diagnostic procedures.**