

PERFORMANCE DATA SHEET

1850

Monoclonal anti- human CD31(PECAM-1)/FITC*

mAb name/Clone: 158-2B3

Isotype: Mouse IgG1

Immunogen: Stimulated human leukocytes

CATALOG#: 180-040

QUANTITY: 120 tests

VOLUME IN VIAL: 0.2ml

WORKING DILUTION: 1:50 (or use 1.6µl of concentrated stock per 5×10^5 -cell test)

INFORMATION: Human CD31 is an adhesion molecule expressed on platelets, endothelial cells, leukocytes and their bone marrow precursors. CD31 plays a role in homophilic adhesion and heterophilic transendothelial migration (3). Antibody 158-2B3 reacts with domain 1 of CD31 and blocks homophilic interaction and heterophilic transendothelial migration (1).

References: 1) Leukocyte Typing VI (T. Kishimoto, et al, eds.) Garland Publishing, Inc., New York (1997) p. 362-372. 2) P.J. Newman, (1997) J Clin Invest **99**: 3-10. 3) K.L. Yong, et al, (1998) Blood **91**: 1196-1205.

STORAGE CONDITIONS: Store at 2 - 5°C. Freeze/Thawing is not recommended. Protect from light.

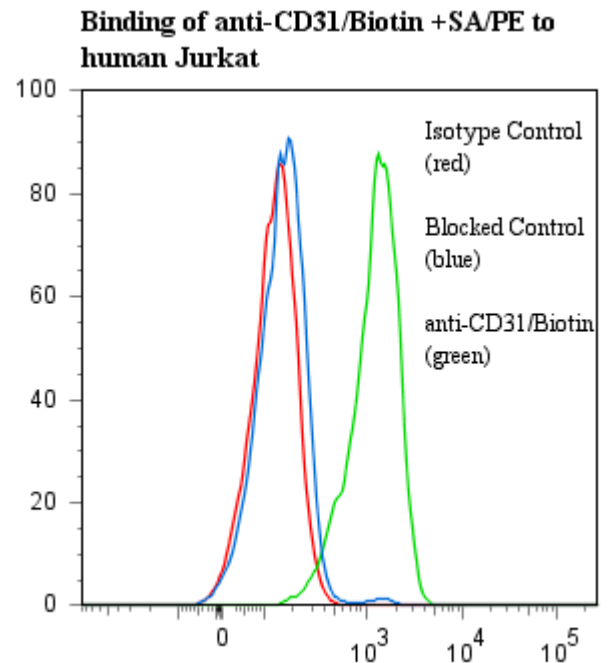
PRODUCT STABILITY: Product should retain activity for at least 12 months after shipping date when stored as recommended. Ship Date: _____

BUFFER: 50 mM Sodium Phosphate pH 7.5, 100 mM Potassium Chloride, 150mM NaCl, 5% Glycerol, 0.2% BSA, 0.04% NaN₃ (as a preservative).

PRODUCTION: Protein A purified antibody from tissue culture supernatant was reacted with FITC. Unconjugated FITC was separated from antibody/FITC conjugate by desalting column. The antibody/FITC conjugate is at **0.5 mg/ml** with a Fluorescein/IgG molar ratio of 8.7.

PERFORMANCE: Five $\times 10^5$ cultured **Jurkat** cells were washed and incubated 45 minutes on ice with 80 µl of anti-CD31/FITC at a **1:50** dilution factor (10µg/ml). Cells were washed three times, fixed and analyzed by FACS. Cells stained positive with a mean shift of **1.0** log₁₀ fluorescent units when compared to a Mouse IgG1/FITC negative control (Catalog #278-040) at a similar concentration. Binding was blocked when cells were pre incubated 10 minutes with 20 µl of 0.5 mg/ml anti-CD31 antibody (Catalog #180-020).

**This Product is intended for Laboratory Research use only.*



Ancell Corporation P.O. Box 87 243 Third Street North Bayport, MN 55003-0087 USA
Phone: Toll free 800-374-9523 or 651-439-0835 Fax: 651-439-1940