

PERFORMANCE DATA SHEET

2911

Monoclonal anti-human CD31(PECAM-1)/Biotin*

mAb name/Clone: 158-2B3

Isotype: Mouse IgG1

Immunogen: Stimulated human leukocytes

CATALOG#: 180-030

QUANTITY: 100 µg

CONCENTRATION: 1.0 mg/ml

INFORMATION: Human CD31 is an adhesion molecule expressed on platelets, endothelial cells, leukocytes and their bone marrow precursors. CD31 plays a role in homophilic adhesion and heterophilic transendothelial migration (3). Antibody 158-2B3 reacts with domain 1 of CD31 and blocks homophilic interaction and heterophilic transendothelial migration (1).

References: 1) Leukocyte Typing VI (T. Kishimoto, et al, eds.) Garland Publishing, Inc., New York (1997) p. 362-372. 2) P.J. Newman, (1997) J Clin Invest **99**: 3-10. 3) K.L. Yong, et al, (1998) Blood **91**: 1196-1205.

STORAGE CONDITIONS: Store at 2 - 8°C. Freeze/thawing not recommended.

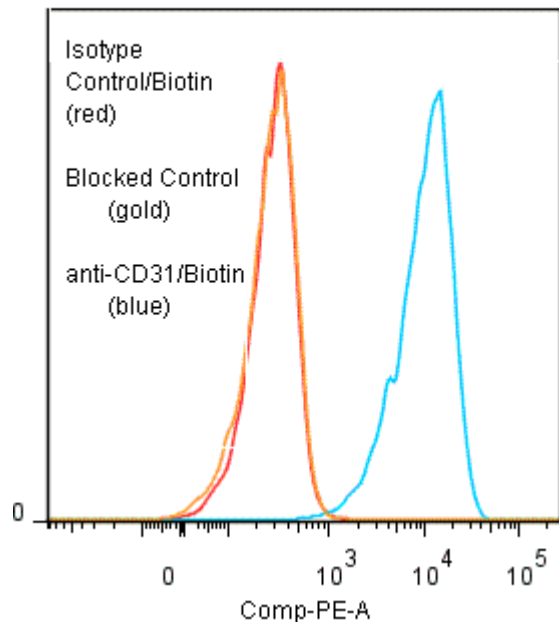
PRODUCT STABILITY: Product should retain activity for at least 12 months after shipping date when stored as recommended. Ship Date: _____

BUFFER: 50 mM Sodium Phosphate pH 7.5, 100 mM Potassium Chloride, 150mM NaCl, 5% Glycerol, 0.2% BSA, 0.04% NaN₃ (as a preservative).

PRODUCTION: Antibody from (low FBS containing) tissue culture supernatant was Protein A purified to >95% mouse immunoglobulin by SDS-PAGE (<1% bovine immunoglobulin), and reacted with NHS-Biotin. Unconjugated Biotin was removed from conjugate using a desalting column.

PERFORMANCE: Five x 10⁵ cultured human **Jurkat** cells were washed and incubated 45 minutes on ice with 80 µl of anti-CD31/Biotin at 5 µg/ml. Cells were washed twice and incubated with 2^o reagent Streptavidin/R-PE (Catalog #253-050) after which they were washed three times, fixed and analyzed by FACS. Cells stained positive with a mean shift of 1.58 log₁₀ fluorescent units when compared to a Mouse IgG1/Biotin negative control (Catalog #278-030). Binding was blocked when cells were pre incubated 10 minutes with 20 µl of 0.5 mg/ml anti-CD31 antibody (Catalog #180-020).

Binding of anti-CD31/Biotin +SA/PE to human Jurkat cells



* **Research Use Only. Not for use in Diagnostic procedures.**