

PERFORMANCE DATA SHEET

2944

Monoclonal anti-human CD30(Ki-1)/APC*

mAb name/Clone: AC10

Isotype: Mouse IgG1

Immunogen: Human YT lymphoma cells

CATALOG#: 179-060

QUANTITY: 120 tests

VOLUME IN VIAL: 0.2 ml

WORKING DILUTION: 1:50 (or use 1.6µl of concentrated stock per 5 x 10⁵-cell test)

INFORMATION: Human CD30 is a member of the tumor necrosis factor (TNF) receptor family and is expressed on mitogen activated B and T cells. Antibody AC10 recognizes the CD30 molecule of about 120 kd.

References: M.A. Bowen, et al, (1993) J Immunol **151**: 5896-5906. Leukocyte Typing V (S.F. Schlossman, et al, eds.) Oxford University Press, Oxford, (1995) p. 1115-1122. B. Falini, et al, (1995) Blood **85**: 1-14.

STORAGE CONDITIONS: Store at 2 - 5°C. Do not freeze! Protect from light.

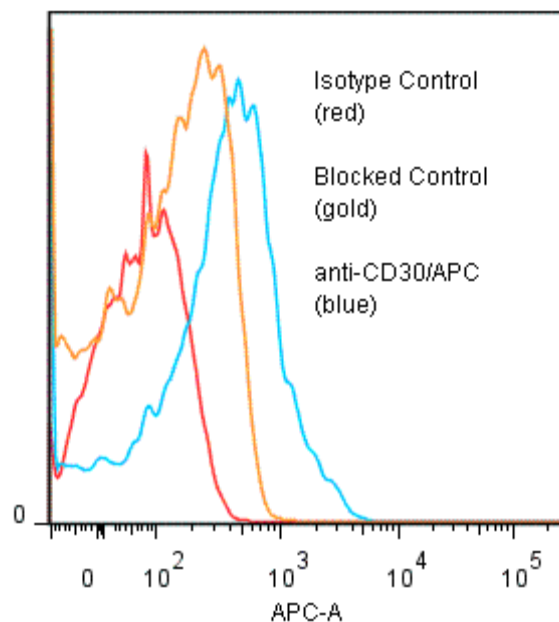
PRODUCT STABILITY: Product should retain activity for at least 12 months after shipping date when stored as recommended. Ship Date: _____

BUFFER: 50 mM Sodium Phosphate pH 7.5, 500 mM Potassium Chloride, 150mM NaCl, 15% Glycerol, 0.2% BSA, 0.04% NaN₃ (as a preservative).

PRODUCTION: Protein A purified antibody from tissue culture supernatant was conjugated to cross-linked Allophycocyanin through a sulfo-ester linkage. Unconjugated antibody was removed using size exclusion chromatography. Antibody conjugate is at approximately **1.0 mg/ml** with an APC : mAb molar ratio of ratio of **0.71**.

PERFORMANCE: Five x 10⁵ cultured CEM human tumor cells were washed and incubated 45 minutes on ice with 80 µl of anti-CD30/APC at a **1:50** dilution (**20µg/ml**). Cells were washed three times, fixed and analyzed by FACS. Cells stained positive with a mean shift of **0.73** log₁₀ fluorescent units when compared to a buffer control. Binding was blocked when cells were pre incubated 10 minutes with 20 µl of 0.5 mg/ml anti-CD30 antibody (Catalog #179-020).

Binding of anti-CD30/APC to human CEM cells



** Research Use Only. Not for use in Diagnostic procedures.*