

## PERFORMANCE DATA SHEET

3217

### *Monoclonal anti-human CD30(Ki-1)/APC\**

**mAb name/Clone:** AC10

**Isotype:** Mouse IgG2bk

**Immunogen:** Human YT lymphoma cells

**CATALOG#:** 179-060

**QUANTITY:** 120 tests

**VOLUME IN VIAL:** 0.2 ml

**WORKING DILUTION:** 1:50 (or use 1.6µl of concentrated stock per  $5 \times 10^5$ -cell test)

**INFORMATION:** Human CD30 is a member of the tumor necrosis factor (TNF) receptor family and is expressed on mitogen activated B and T cells. Antibody AC10 recognizes the CD30 molecule of about 120 kd.

**References:** M.A. Bowen, et al, (1993) J Immunol **151**: 5896-5906. Leukocyte Typing V (S.F. Schlossman, et al, eds.) Oxford University Press, Oxford, (1995) p. 1115-1122. B. Falini, et al, (1995) Blood **85**: 1-14.

**STORAGE CONDITIONS:** Store at 2 - 5°C. Do not freeze! Protect from light.

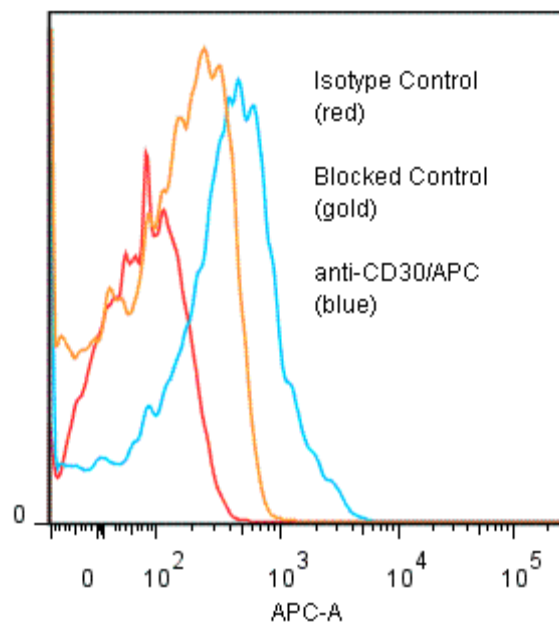
**PRODUCT STABILITY:** Product should retain activity for at least 12 months after shipping date when stored as recommended. Ship Date: \_\_\_\_\_

**BUFFER:** 50 mM Sodium Phosphate pH 7.5, 500 mM Potassium Chloride, 150mM NaCl, 15% Glycerol, 0.2% BSA, 0.04% NaN<sub>3</sub> (as a preservative).

**PRODUCTION:** Protein A purified antibody from tissue culture supernatant was conjugated to cross-linked Allophycocyanin through a sulfo-ester linkage. Unconjugated antibody was removed using size exclusion chromatography. Antibody conjugate is at approximately 1.0 mg/ml with an APC / mAb molar ratio of 0.71.

**PERFORMANCE:** Five x 10<sup>5</sup> cultured CEM human tumor cells were washed and incubated 45 minutes on ice with 80 µl of anti-CD30/APC at a 1:50 dilution (20µg/ml). Cells were washed three times, fixed and analyzed by FACS. Cells stained positive with a mean shift of 0.73 log<sub>10</sub> fluorescent units when compared to a buffer control. Binding was blocked when cells were pre incubated 10 minutes with 20 µl of 0.5 mg/ml anti-CD30 antibody (Catalog #179-020).

#### Binding of anti-CD30/APC to human CEM cells



\* *Research Use Only. Not for use in Diagnostic procedures.*