

PERFORMANCE DATA SHEET

3425

Monoclonal anti-human CD28 (stimulating)*

mAb name/Clone: ANC28.1/5D10

Isotype: Mouse IgG1 κ

Immunogen: Human CD28 Ig fusion protein and HPB-MLT human tumor cells

CATALOG#: 177-820

QUANTITY: 100 μ g

CONCENTRATION: 1.0 mg/ml

INFORMATION: Human CD28 is an important costimulatory molecule found on all CD4⁺ T cells and on about half of the CD8⁺ T cells. T cell activities attributed to CD28 include prevention of anergy, induction of cytokine gene transcription, stabilization of cytokine mRNA and activation of CD8⁺ cytotoxic T lymphocytes. The ligands for CD28 identified as CD80(B7-1) and CD86(B7-2), are immunoglobulin superfamily monomeric transmembrane glycoproteins of 60 kd and 80 kd respectively. Anti-CD28 antibodies have recently been shown to have a strong adjuvant effect when conjugated to the immunogen (4). Antibody ANC28.1 recognizes CD28 expressed on human T cells and also on BHK cells transfected with human CD28. Monomeric and cross linked ANC28.1 will stimulate expression of IL-2 from CD28⁺ cells.

References: (1) M.K. Jenkins & J.G. Johnson, (1993) *Curr Opin Immunol* 5: 361-367. (2) 61st Forum in Immunology, (1995) *Res Immunol* 146: 127-205. (3) I. Kariv, A. Truneh & R.W. Sweet, (1996) *J Immunol* 157: 29-38. (4) J. Carling, et al, (2003) *J Immunol* 33: 135-142.

STORAGE CONDITIONS: Store at 2 - 5°C. **Open under aseptic conditions. Freeze/Thawing is not recommended.**

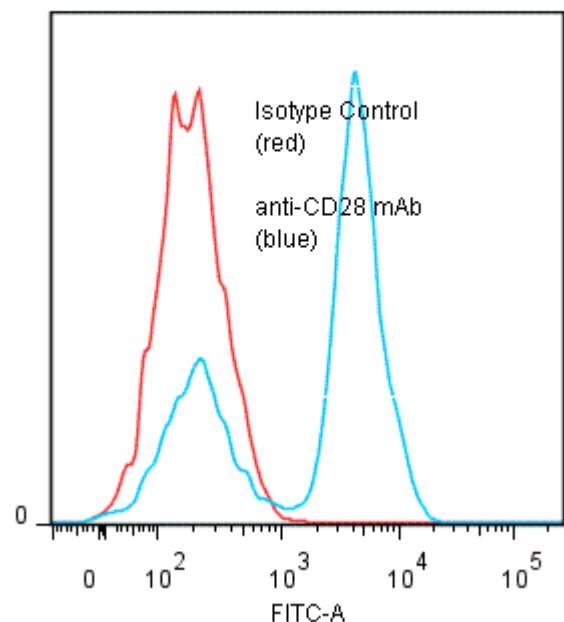
PRODUCT STABILITY: Product should retain activity for at least 12 months after shipping date when stored as recommended. Ship Date: _____

BUFFER : 50 mM Sodium Phosphate pH 7.5, 100 mM Potassium Chloride, 150mM NaCl.

PRODUCTION: Antibody was Protein A purified from (low FBS containing) tissue culture supernatant. Purity was >95% Immunoglobulin by SDS-PAGE with less than 1% Bovine Immunoglobulin.

PERFORMANCE: Five x 10⁵ ficoll prepared human PBMC per tube were washed and pre incubated 15 minutes on ice with 20ul of 0.5mg/ml human IgG (to block non specific binding) after which they were incubated 45 minutes on ice with 80 μ l of anti-CD28 antibody at 5 μ g/ml. Cells were washed twice and incubated with 2^o reagent Goat anti-Mouse IgG/FITC (Catalog #232-011), after which they were washed three times, fixed and analyzed by FACS using a lymphoid gate. A 65% subpopulation of the cells stained positive with a mean shift of 1.4 log₁₀ fluorescent units when compared to a Mouse IgG1 negative control (Catalog #278-010).

Binding of anti-CD28 mAb +GAM/FITC to human PBMC



* **Research Use Only. Not for use in Diagnostic procedures.**