

PERFORMANCE DATA SHEET

2542

Monoclonal anti-human CD27*

mAb name/Clone: M-T271

Isotype: Mouse IgG1

Immunogen: T cell line (from patient with CLL)

CATALOG#: 176-820 (Preservative Free)

QUANTITY: 100 µg

CONCENTRATION: 1.0 mg/ml

INFORMATION: Human CD27 is a lymphocyte specific member of the tumor necrosis factor (TNF) receptor family and is found primarily on peripheral blood T cells and on a subpopulation of B cells and NK cells. The ligand for CD27 is CD70, which is a member of the TNF ligand superfamily. Antibody M-T271 recognizes the dimeric CD27 molecule of approximately 110 kd.

References: Leukocyte Typing IV (W. Knapp, et al, eds.) Oxford University Press, Oxford, (1989) p. 350-352. K. Agematsu, et al, (1994) J Immunol **153**: 1421-1429. R.Q. Hintzen, et al, (1994) Immunol Today **15**: 307-311. Leukocyte Typing V (S.F. Schlossman, et al, eds.) Oxford University Press, Oxford, (1995) p. 356-360, 435-437. K. Agematsu, et al, (1995) J Immunol **154**: 3627-3635.

STORAGE CONDITIONS: Store at 2 - 5°C. Freeze/Thawing is not recommended. Open under aseptic conditions.

PRODUCT STABILITY: Product should retain activity for at least 12 months after shipping date when stored as recommended. Ship Date: _____

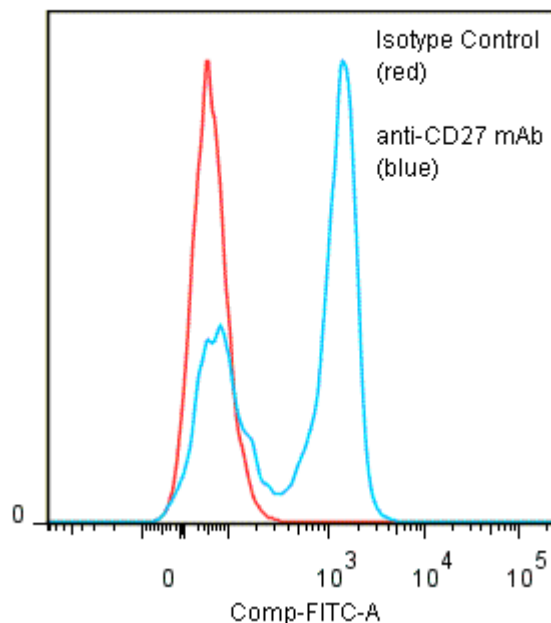
BUFFER: 50 mM Sodium Phosphate pH 7.5, 100 mM Potassium Chloride, 150mM NaCl.

PRODUCTION: Antibody was Protein A purified from (low FBS containing) tissue culture supernatant. Purity was >95% Immunoglobulin by SDS-PAGE and contains less than 1% Bovine Immunoglobulin. Product was 0.2µ sterile filtered and viald under aseptic conditions.

PRODUCTION: Antibody was Protein A purified from (low FBS containing) tissue culture supernatant. Purity was >95% Immunoglobulin by SDS-PAGE with less than 1% Bovine Immunoglobulin.

PERFORMANCE: Five x 10⁵ ficoll prepared **human peripheral blood mononuclear cells** were washed and pre incubated 5 minutes with 20 µl of 250 µg/ml human IgG (to block non specific binding) after which they were incubated 45 minutes on ice with 80 µl of anti-CD27 antibody at **10 µg/ml**. Cells were washed twice and incubated with 2^o reagent Goat anti-Mouse IgG/FITC (Catalog #232-011), after which they were washed three times, fixed and analyzed by FACS. A net **58%** sub population of the cells stained positive with a mean shift of **1.36** log₁₀ fluorescent units when compared to a Mouse IgG1 negative control (Catalog #278-010) at a similar concentration.

Binding of anti-CD27 mAb +GAM/FITC to human PBL



**This Product is intended for Laboratory Research use only.*