

PERFORMANCE DATA SHEET

2038

Monoclonal anti-human CD27/R-PE *

mAb name/Clone: M-T271

Isotype: Mouse IgG1

Immunogen: T cell line (from patient with CLL)

CATALOG#: 176-050

QUANTITY: 120 tests

VOLUME IN VIAL: 0.2 ml

WORKING DILUTION: 1:50 (or use 1.6µl of concentrated stock per 5 x 10⁵-cell test)

INFORMATION: Human CD27 is a lymphocyte specific member of the tumor necrosis factor (TNF) receptor family and is found primarily on peripheral blood T cells and on a subpopulation of B cells and NK cells. The ligand for CD27 is CD70, which is a member of the TNF ligand superfamily. Antibody M-T271 recognizes the dimeric CD27 molecule of approximately 110 kd.

References: Leukocyte Typing IV (W. Knapp, et al, eds.) Oxford University Press, Oxford, (1989) p. 350-352. K. Agematsu, et al, (1994) J Immunol **153**: 1421-1429. R.Q. Hintzen, et al, (1994) Immunol Today **15**: 307-311. Leukocyte Typing V (S.F. Schlossman, et al, eds.) Oxford University Press, Oxford, (1995) p. 356-360, 435-437. K. Agematsu, et al, (1995) J Immunol **154**: 3627-3635.

STORAGE CONDITIONS: Store at 2 - 5°C. Do not freeze! Protect from light.

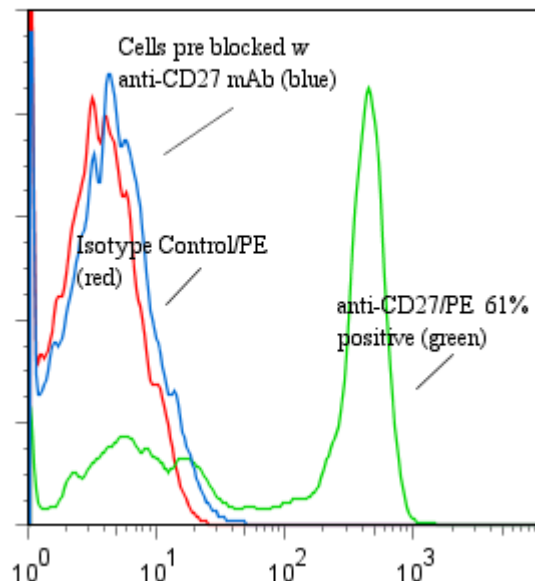
PRODUCT STABILITY: Product should retain activity for at least 12 months after shipping date when stored as recommended. Ship Date: _____

BUFFER: 50 mM Sodium Phosphate pH 7.5, 500 mM Potassium Chloride, 150mM NaCl, 15% Glycerol, 0.2% BSA, 0.04% NaN₃ (as a preservative).

PRODUCTION: Protein A purified antibody from tissue culture supernatant was conjugated to R-Phycoerythrin through a sulfo-ester linkage. Unconjugated antibody was removed using size exclusion chromatography. Antibody conjugate is at **0.25 mg/ml** with an OD565/OD280 ratio of 2.9.

PERFORMANCE: Five x 10⁵ ficoll prepared **human peripheral blood mononuclear cells** were washed and pre incubated 5 minutes with 20 µl of 250 µg/ml human IgG (to block non specific binding) after which they were washed and incubated 45 minutes on ice with 80 µl of anti-CD27/R-PE at a **1:50** dilution (5 µg/ml). Cells were washed three times, fixed and analyzed by FACS. A net **61%** subpopulation of cells stained positive with a mean shift of **1.97 log₁₀** fluorescent units when compared to a Mouse IgG1/PE negative control (Catalog #278-050). Binding was blocked when cells were pre incubated 10 minutes with 20 µl of 0.5 mg/ml anti-CD27 antibody (Catalog #176-020).

Binding of anti-CD27/PE to human PBMC



* **Research Use Only. Not for use in Diagnostic procedures.**