

PERFORMANCE DATA SHEET

3233

Monoclonal anti-human CD26 (dipeptidyl peptidase IV)***mAb name/Clone:** 202.36**Isotype:** Mouse IgG2b**Immunogen:** Human T cell clone**CATALOG#:** 175-820 (Preservative Free)**QUANTITY:** 100 µg**CONCENTRATION:** 1.0 mg/ml

INFORMATION: Human CD26 is a T cell activation antigen which can be associated with costimulation (1). The significance of the dipeptidyl peptidase IV activity remains unknown. Characterization of adenosine deaminase binding to CD26 suggests an important immunoregulatory role (2). CD26 is expressed at high levels on CD4+ Th17 T cells (3). Antibody 202.36 reacts with the type II membrane protein CD26.

References: 1.) Leukocyte Typing V (S.F. Schlossman, et al, eds.) Oxford University Press, Oxford (1995) p. 1105-1114. 2.) R.P. Dong, et al, (1996) J. Immunol 156: 1349-1355. 3.) Bengsch B, R Thimme, et al, (2012) J Immunol 188(11): 5438-5447.

STORAGE CONDITIONS: Store at 2 - 5°C. Freeze/Thawing is not recommended. Open under aseptic conditions.

PRODUCT STABILITY: Product should retain activity for at least 12 months after shipping date when stored as recommended. Ship Date: _____

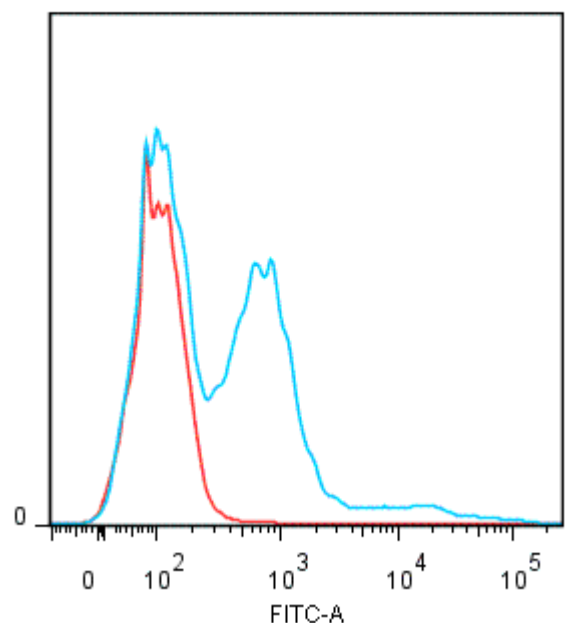
BUFFER: 50 mM Sodium Phosphate pH 7.5, 100 mM Potassium Chloride, 150mM NaCl.

PRODUCTION: Antibody was Protein A purified from (low FBS containing) tissue culture supernatant. Purity was >95% Immunoglobulin by SDS-PAGE and contains less than 1% Bovine Immunoglobulin. Product was 0.2µ sterile filtered and vialled under aseptic conditions.

PRODUCTION: Antibody was Protein A purified from (low FBS containing) tissue culture supernatant. Purity was >95% Immunoglobulin by SDS-PAGE with less than 1% Bovine Immunoglobulin.

PERFORMANCE: Ficoll prepared human **peripheral blood mononuclear cells** were stimulated in culture 1 day with 10 ng/ml PMA and 1 µM Ionomycin. Cells were harvested, and 5 x 10⁵ per tube were washed and pre incubated ~5 minutes with 20 µl of human IgG at 250 µg/ml (to block non specific binding), after which they were incubated 45 minutes on ice with 80 µl of anti-CD26 antibody at **10 µg/ml**. Cells were washed twice and incubated with 2^o reagent Goat anti-Mouse IgG/FITC (Catalog #232-011), after which they were washed three times, fixed and analyzed by FACS using a lymphoid gate. A net 43% sub population of the cells stained positive with a mean shift of **1.47** log₁₀ fluorescent units when compared to a Mouse IgG2b negative control (Catalog #284-010).

Binding of anti-CD26 mAb +GAM/FITC to human PBL



* **Research Use Only. Not for use in Diagnostic procedures.**