

PERFORMANCE DATA SHEET

3019

Monoclonal anti-human CD26 (dipeptidyl peptidase IV)/Biotin*

mAb name/Clone: 202.36

Isotype: Mouse IgG2bκ

Immunogen: Human T cell clone

CATALOG#: 175-030

QUANTITY: 100 µg

CONCENTRATION: 1.0 mg/ml

INFORMATION: Human CD26 is a T cell activation antigen which can be associated with costimulation (1). The significance of the dipeptidyl peptidase IV activity remains unknown. Characterization of adenosine deaminase binding to CD26 suggests an important immunoregulatory role (2). CD26 is expressed at high levels on CD4+ Th17 T cells (3). Antibody 202.36 reacts with the type II membrane protein CD26.

References: 1.) Leukocyte Typing V (S.F. Schlossman, et al, eds.) Oxford University Press, Oxford (1995) p. 1105-1114. 2.) R.P. Dong, et al, (1996) J. Immunol 156: 1349-1355. 3.) Bengsch B, R Thimme, et al, (2012) J Immunol 188(11): 5438-5447.

STORAGE CONDITIONS: Store at 2 - 5°C. Freeze/Thawing is not recommended.

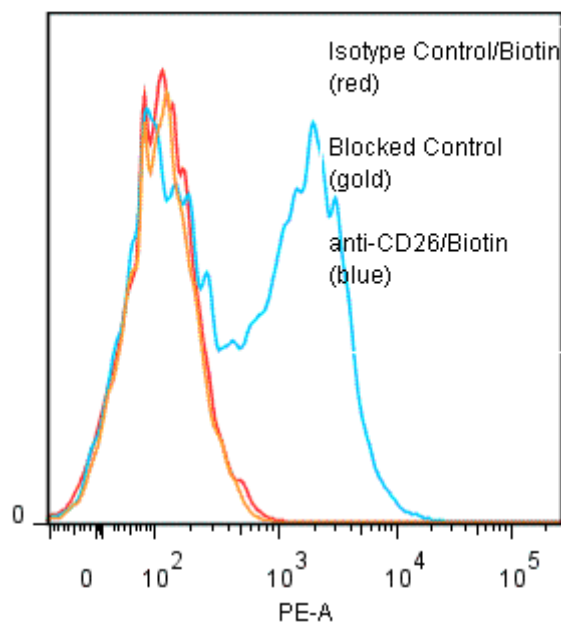
PRODUCT STABILITY: Product should retain activity for at least 12 months after shipping date when stored as recommended. Ship Date: _____

BUFFER: 50 mM Sodium Phosphate pH 7.5, 100 mM Potassium Chloride, 150mM NaCl, 5% Glycerol, 0.2% BSA, 0.04% Na₃ (as a preservative).

PRODUCTION: Antibody from (low FBS containing) tissue culture supernatant was Protein A purified to >95% mouse immunoglobulin by SDS-PAGE (<1% bovine immunoglobulin), and reacted with NHS-Biotin. Unconjugated Biotin was removed from conjugate using a desalting column.

PERFORMANCE: Ficoll prepared human **peripheral blood leukocytes** were stimulated overnight in culture with 5 µg/ml Phytohemagglutinin (PHA). Five x 10⁵ cells per tube were washed and pre incubated ~5 minutes with 20 µl of human IgG at 250 µg/ml (to block non specific binding), after which they were incubated 45 minutes on ice with 80 µl of anti-CD26/Biotin at 10 µg/ml. Cells were then washed twice and incubated with 2^o reagent Streptavidin/R-PE (Cat # 253-050), after which they were washed three times, fixed and analyzed by FACS. A net **47%** sub population of the cells stained positive with a mean shift of **1.21** log₁₀ fluorescent units when compared to a Mouse IgG2b/Biotin (Catalog #284-030) negative control. Binding was blocked when cells were pre incubated 10 minutes with 20 µl of 0.5 mg/ml anti-CD26 antibody (Catalog #175-020).

Binding of anti-CD26/Biotin +SA/PE to stimulated human PBL



* **Research Use Only. Not for use in Diagnostic procedures.**