

PERFORMANCE DATA SHEET

1746

Monoclonal anti-human CD25(IL2-R alpha, TAC)/FITC*

mAb name/Clone: 7G7B6

Isotype: Mouse IgG2ak

Immunogen: Stimulated PBMC

CATALOG#: 174-040

QUANTITY: 120 tests

VOLUME IN VIAL: 0.2ml

WORKING DILUTION: 1:50 (or use 1.6µl of concentrated stock per 5×10^5 -cell test)

INFORMATION: Expression of human CD25 (the alpha subunit of the IL-2 receptor complex) is dramatically upregulated on activated T cells, B cells, NK cells and macrophages (3). Antibodies to CD25 are being studied for potential use as an immunodirected therapy to selectively attack (kill) CD25 expressing cells (4). Antibody 7G7B6 recognizes epitope B of the IL-2 alpha receptor of about 55 kd (1,6). Antibody 7G7B6 does not block IL-2 binding to its receptor (1).

References: (1) L.A. Rubin, et al, (1985) *Hybridoma* 4: 91-102. (2) B. Boutin, et al, (1989) *Neuropediatrics* 20: 202-206. (3) T.A. Waldmann, et al, (1989) *Annu Rev Biochem* 58: 875-911. (4) T.A. Waldmann, et al, (1995) *Blood* 86: 4063-4075. (5) U.S. Patent No. 4,707,443. (6) *Leukocyte Typing IV* (W. Knapp, et al, eds.) Oxford University Press, Oxford, (1989) p. 403-406.

STORAGE CONDITIONS: Store at 2 - 5°C. Freeze/Thawing is not recommended.

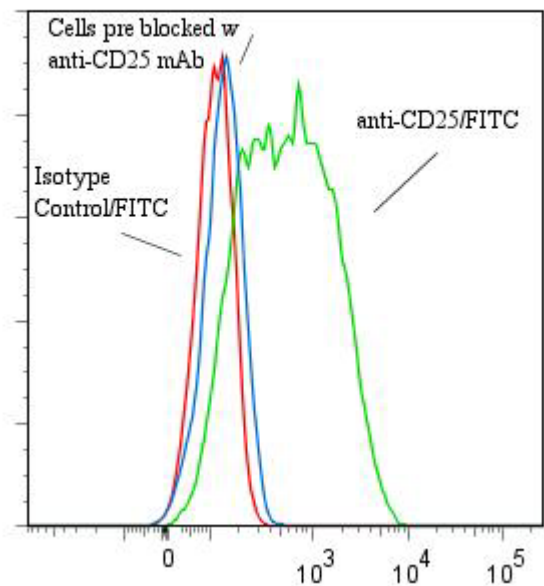
PRODUCT STABILITY: Product should retain activity for at least 12 months after shipping date when stored as recommended. Ship Date: _____

BUFFER: 50 mM Sodium Phosphate pH 7.5, 100 mM Potassium Chloride, 150mM NaCl, 5% Glycerol, 0.2% BSA, 0.04% NaN_3 (as a preservative).

PRODUCTION: Protein A purified antibody from tissue culture supernatant was reacted with FITC. Unconjugated FITC was separated from antibody/FITC conjugate by desalting column. The antibody/FITC conjugate is at 0.25 mg/ml with a Fluorescein/IgG molar ratio of 11.2.

PERFORMANCE: Cultured human CEM were stimulated overnight in the presence of PMA (10ng/ml) and ionomycin (1µM). Five $\times 10^5$ cells per tube were washed and incubated 45 minutes on ice with 80 µl of anti-CD25/FITC at a 1:50 dilution factor (5µg/ml final). Cells were washed three times, fixed and analyzed by FACS. Cells stained positive (65%) with a mean shift of 0.9 \log_{10} fluorescent units when compared to a Mouse IgG2a/FITC negative control (Catalog # 281-040) at a similar concentration. Binding was blocked when cells were pre incubated 10 minutes with 20µl of 0.5 mg/ml anti-CD25 antibody (Catalog #174-020).

Binding of anti-CD25/FITC to stimulated human CEM cells



**This Product is intended for Laboratory Research use only.*

Ancell Corporation P.O. Box 87 243 Third Street North Bayport, MN 55003-0087 USA
Phone: Toll free 800-374-9523 or 651-439-0835 Fax: 651-439-1940