

**PERFORMANCE DATA SHEET**

1746

**Monoclonal anti-human CD25(IL2-R alpha, TAC)/FITC\***

**mAb name/Clone:** 7G7B6

**Isotype:** Mouse IgG2ak

**Immunogen:** Stimulated PBMC

**CATALOG#:** 174-040

**QUANTITY:** 120 tests

**VOLUME IN VIAL:** 0.2ml

**WORKING DILUTION:** 1:50 (or use 1.6µl of concentrated stock per  $5 \times 10^5$ -cell test)

**INFORMATION:** Expression of human CD25 (the alpha subunit of the IL-2 receptor complex) is dramatically upregulated on activated T cells, B cells, NK cells and macrophages (3). Antibodies to CD25 are being studied for potential use as an immunodirected therapy to selectively attack (kill) CD25 expressing cells (4). Antibody 7G7B6 recognizes epitope B of the IL-2 alpha receptor of about 55 kd (1,6). Antibody 7G7B6 does not block IL-2 binding to its receptor (1).

**References:** (1) L.A. Rubin, et al, (1985) *Hybridoma* 4: 91-102. (2) B. Boutin, et al, (1989) *Neuropediatrics* 20: 202-206. (3) T.A. Waldmann, et al, (1989) *Annu Rev Biochem* 58: 875-911. (4) T.A. Waldmann, et al, (1995) *Blood* 86: 4063-4075. (5) U.S. Patent No. 4,707,443. (6) *Leukocyte Typing IV* (W. Knapp, et al, eds.) Oxford University Press, Oxford, (1989) p. 403-406.

**STORAGE CONDITIONS:** Store at 2 - 5°C. Freeze/Thawing is not recommended.

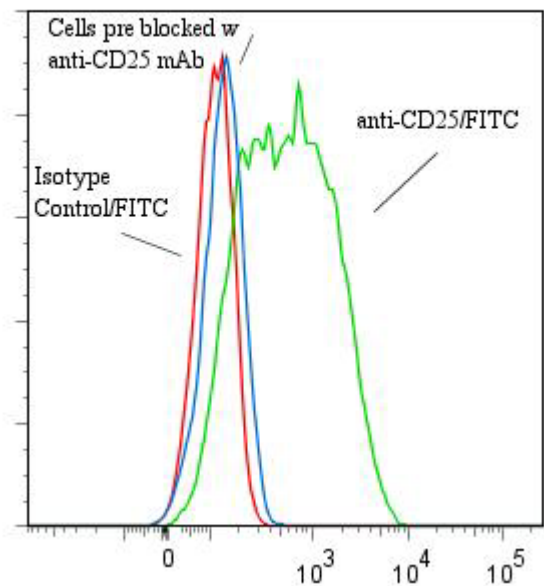
**PRODUCT STABILITY:** Product should retain activity for at least 12 months after shipping date when stored as recommended. Ship Date: \_\_\_\_\_

**BUFFER:** 50 mM Sodium Phosphate pH 7.5, 100 mM Potassium Chloride, 150mM NaCl, 5% Glycerol, 0.2% BSA, 0.04%  $\text{NaN}_3$  (as a preservative).

**PRODUCTION:** Protein A purified antibody from tissue culture supernatant was reacted with FITC. Unconjugated FITC was separated from antibody/FITC conjugate by desalting column. The antibody/FITC conjugate is at 0.25 mg/ml with a Fluorescein/IgG molar ratio of 11.2.

**PERFORMANCE:** Cultured human CEM were stimulated overnight in the presence of PMA (10ng/ml) and ionomycin (1µM). Five x  $10^5$  cells per tube were washed and incubated 45 minutes on ice with 80 µl of anti-CD25/FITC at a 1:50 dilution factor (5µg/ml final). Cells were washed three times, fixed and analyzed by FACS. Cells stained positive (65%) with a mean shift of 0.9  $\log_{10}$  fluorescent units when compared to a Mouse IgG2a/FITC isotype control (Catalog # 281-040). Binding was blocked when cells were pre incubated 10 minutes with 20µl of 0.5 mg/ml anti-CD25 antibody (Catalog #174-020).

**Binding of anti-CD25/FITC to stimulated human CEM cells**



\* *Research Use Only. Not for use in Diagnostic procedures.*