

**PERFORMANCE DATA SHEET**

1908

**Monoclonal anti-human CD24/Biotin\***

**mAb name/Clone:** BA-1

**Isotype:** Mouse IgM

**Immunogen:** Human B lymphocyte tumor cells: Nalm-6-M1

**CATALOG#:** 173-030

**QUANTITY:** 100 µg

**CONCENTRATION:** 1.0 mg/ml

**INFORMATION:** Human CD24 is a glycosyl phosphatidyl inositol (GPI) anchored surface protein found on B cells during multiple stages of development from precursor to the onset of plasma cell differentiation. Antibody BA-1 recognizes a sialic acid-dependent epitope of human CD24 of approximately 35/45 kd.

**References:** C.S. Abramson, J.H. Kersey & T.W. LeBien, J Immunol (1981) **126**: 83-88. H. Mehmet, M. Larkin, P.W. Tang, T.W. LeBien & T. Feizi, Clin Exp Immunol (1990) **81**: 489-495.

**STORAGE CONDITIONS:** *Store at 2 - 5°C.* Freeze/thawing not recommended.

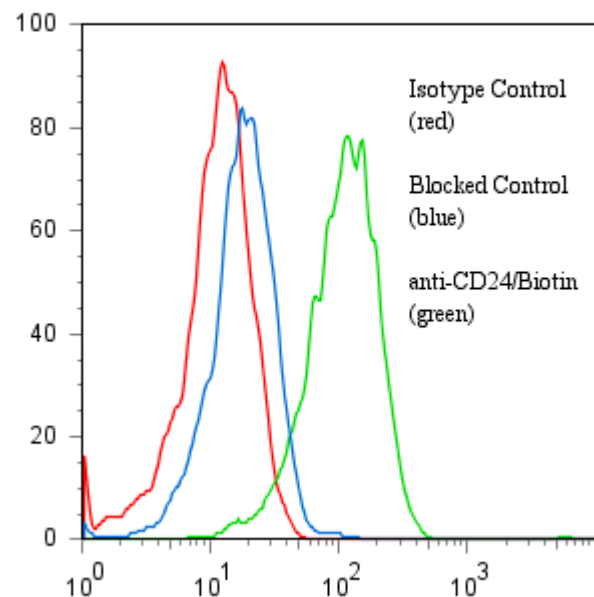
**PRODUCT STABILITY:** Product should retain activity for at least 12 months after shipping date when stored as recommended. Ship Date: \_\_\_\_\_

**BUFFER:** 50 mM Sodium Phosphate pH 7.5, 500 mM Potassium Chloride, 150mM NaCl, 5% Glycerol, 0.3% BSA, 0.04% Na<sub>3</sub> (as a preservative).

**PRODUCTION:** Antibody from (low FBS containing) tissue culture supernatant was Protein A purified to >95% mouse immunoglobulin by SDS-PAGE (<1% bovine immunoglobulin), and reacted with NHS-Biotin. Unconjugated Biotin was removed from conjugate using a desalting column.

**PERFORMANCE:** Five x 10<sup>5</sup> cultured Nalm-6 cells were incubated 45 minutes on ice with 80 µl of anti-CD24/Biotin at a concentration of 10 µg/ml. Cells were then washed twice and incubated 45 minutes with 2<sup>o</sup> reagent Streptavidin R-Phycoerythrin (Catalog #253-050), after which they were washed three times, fixed and analyzed by FACS. Cells stained positive with a mean shift of 1.1 log<sub>10</sub> fluorescent units when compared to a Mouse IgM/Biotin negative control (Catalog #290-030). This shift was blocked when cells were pre incubated 10 minutes with 20 µl of 0.5 mg/ml anti-CD24 antibody (Catalog #173-020).

**Binding of anti-CD24/Biotin +SA/PE to human Nalm-6 cells**



\* **Research Use Only. Not for use in Diagnostic procedures.**