

**PERFORMANCE DATA SHEET**

3043

**Monoclonal anti-human CD23(FcεRIII)\***

**mAb name/Clone:** BU38

**Isotype:** Mouse IgG1

**Immunogen:** Human peripheral myeloma cells

**CATALOG#:** 172-820 (Preservative-free)

**QUANTITY:** 100 µg

**CONCENTRATION:** 1.0 mg/ml

**INFORMATION:** Human CD23 is a low affinity receptor for IgE (FcεRII) found primarily on mature B cells and also on eosinophils, monocytes, dendritic cells, platelets, and a subset of thymic epithelial cells. CD23 interacts with CD21. Antibody BU38 recognizes the CD23 molecule of 45 kd.

**References:** Leukocyte Typing IV (W. Knapp, et al, eds.) Oxford University Press, Oxford, (1989) p. 67-81. D. L. Hardie, et al, (1993) Eur J Immunol **23**: 997-1004. Leukocyte Typing V (S.F. Schlossman, et al, eds.) Oxford University Press, Oxford, (1995) p. 530-538. J.Y. Bonnefoy, et al, (1995) Curr Opin Immunol **7**: 355-359.

**STORAGE CONDITIONS:** Store at 2 - 5°C. Open under aseptic conditions. Freeze/Thawing is not recommended.

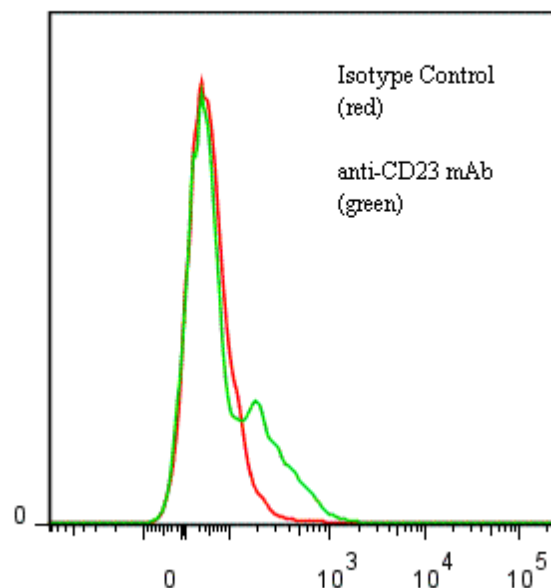
**PRODUCT STABILITY:** Product should retain activity for at least 12 months after shipping date when stored as recommended. Ship Date: \_\_\_\_\_

**BUFFER:** 50 mM Sodium Phosphate pH 7.5, 100 mM Potassium Chloride, 150mM NaCl.

**PRODUCTION:** Antibody was Protein A purified from (low FBS containing) tissue culture supernatant. Purity was >95% Immunoglobulin by SDS-PAGE and contains less than 1% Bovine Immunoglobulin. Product was 0.2 µm filtered and viald under aseptic conditions.

**PERFORMANCE:** Five x 10<sup>5</sup> ficoll prepared **human peripheral blood mononuclear cells** were washed and preincubated 5 minutes with 20µl of 250µg/ml human IgG (To block non specific binding) after which they were washed and incubated 45 minutes on ice with 80 µl of anti-CD23 antibody at a concentration of **10 µg/ml**. Cells were washed twice and incubated with 2<sup>o</sup> reagent Goat anti-Mouse IgG/FITC (Catalog #232-011), after which they were washed three times, fixed and analyzed by FACS. A net **4.5 %** sub population of the cells stained positive with a mean shift of **0.57 log<sub>10</sub>** fluorescent units when compared to a Mouse IgG1 negative control (Catalog #278-010).

**Binding of anti-CD23 mAb + GAM/FITC to human PBMC**



\* *Research Use Only. Not for use in Diagnostic procedures.*