

PERFORMANCE DATA SHEET

2726

Monoclonal anti-human CD23/R-PE *

mAb name/Clone: BU38

Isotype: Mouse IgG1

Immunogen: Human peripheral myeloma cells

CATALOG#: 172-050

QUANTITY: 120 tests

VOLUME IN VIAL: 0.2 ml

WORKING DILUTION: 1:50 (or use 1.6µl of concentrated stock per 5 x 10⁵-cell test)

INFORMATION: Human CD23 is a low affinity receptor for IgE (FcεRII) found primarily on mature B cells and also on eosinophils, monocytes, dendritic cells, platelets, and a subset of thymic epithelial cells. CD23 interacts with CD21. Antibody BU38 recognizes the CD23 molecule of 45 kd.

References: Leukocyte Typing IV (W. Knapp, et al, eds.) Oxford University Press, Oxford, (1989) p. 67-81. D. L. Hardie, et al, (1993) Eur J Immunol **23**: 997-1004. Leukocyte Typing V (S.F. Schlossman, et al, eds.) Oxford University Press, Oxford, (1995) p. 530-538. J.Y. Bonnefoy, et al, (1995) Curr Opin Immunol **7**: 355-359.

STORAGE CONDITIONS: Store at 2 - 5°C. Do not freeze! Protect from light.

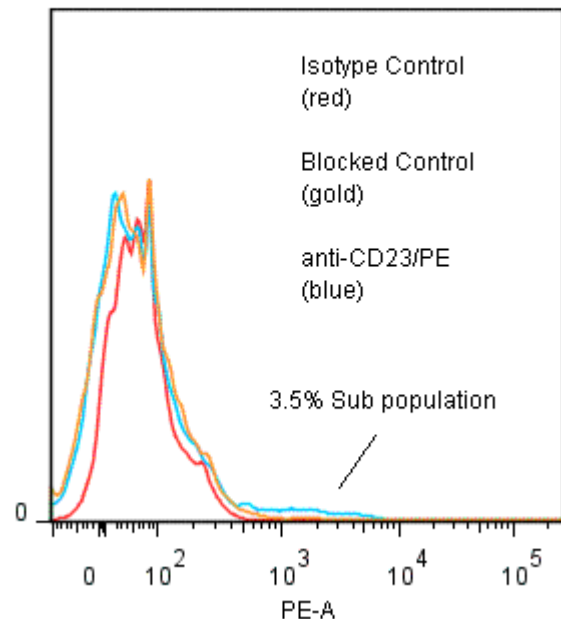
PRODUCT STABILITY: Product should retain activity for at least 12 months after shipping date when stored as recommended. Ship Date: _____

BUFFER: 50 mM Sodium Phosphate pH 7.5, 500 mM Potassium Chloride, 150mM NaCl, 15% Glycerol, 0.2% BSA, 0.04% Na₃N (as a preservative).

PRODUCTION: Protein A purified antibody from tissue culture supernatant was conjugated to R-Phycoerythrin through a sulfo-ester linkage. Unconjugated antibody was removed using size exclusion chromatography. Antibody conjugate is at **0.5 mg/ml** with an A₅₆₅/A₂₈₀ of 2.98.

PERFORMANCE: Five x 10⁵ ficoll prepared **human peripheral blood mononuclear cells** were washed and pre incubated 5 minutes with 20 µl of 250µg/ml human IgG (to block non specific binding) after which they were washed and incubated 45 minutes on ice with 80 µl of anti-CD23/R-PE at a **1:50** dilution (10µg/ml). Cells were washed three times, fixed and analyzed by FACS. A net **3.5%** sub-population of the cells stained positive with a mean shift of **1.44** log₁₀ fluorescent units when compared to a Mouse IgG1/PE negative control (Catalog #278-050). Binding was blocked when cells were pre incubated 10 minutes with 20 µl of unlabeled anti-CD23 antibody at 0.5 mg/ml (Catalog #172-020).

Binding of anti-CD23/PE to human PBMC



* **Research Use Only. Not for use in Diagnostic procedures.**