

**PERFORMANCE DATA SHEET**

2310

**Monoclonal anti-human CD23/FITC\*****mAb name/Clone:** BU38**Isotype:** Mouse IgG1**Immunogen:** Human peripheral myeloma cells**CATALOG#:** 172-040**QUANTITY:** 120 tests**VOLUME IN VIAL:** 0.2 ml**WORKING DILUTION:** 1:50 (or use 1.6µl of concentrated stock per  $5 \times 10^5$ -cell test)

**INFORMATION:** Human CD23 is a low affinity receptor for IgE (FcεRII) found primarily on mature B cells and also on eosinophils, monocytes, dendritic cells, platelets, and a subset of thymic epithelial cells. CD23 interacts with CD21. Antibody BU38 recognizes the CD23 molecule of 45 kd.

**References:** Leukocyte Typing IV (W. Knapp, et al, eds.) Oxford University Press, Oxford, (1989) p. 67-81. D. L. Hardie, et al, (1993) Eur J Immunol **23**: 997-1004. Leukocyte Typing V (S.F. Schlossman, et al, eds.) Oxford University Press, Oxford, (1995) p. 530-538. J.Y. Bonnefoy, et al, (1995) Curr Opin Immunol **7**: 355-359.

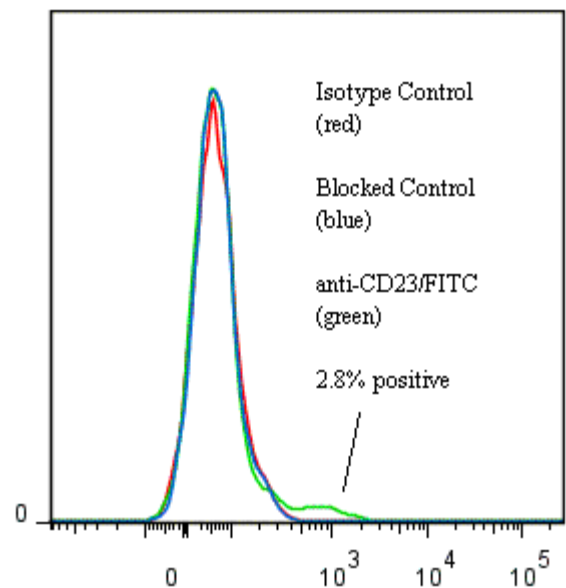
**STORAGE CONDITIONS:** *Store at 2 - 5°C.* Freeze/Thawing is not recommended. Protect from light.

**PRODUCT STABILITY:** Product should retain activity for at least 12 months after shipping date when stored as recommended. Ship Date: \_\_\_\_\_

**BUFFER:** 50 mM Sodium Phosphate pH 7.5, 100 mM Potassium Chloride, 150mM NaCl, 5% Glycerol, 0.2% BSA, 0.04% Na<sub>3</sub> (as a preservative).

**PRODUCTION:** Protein A purified antibody from tissue culture supernatant was reacted with FITC. Unconjugated FITC was separated from antibody/FITC conjugate by desalting column. The antibody/FITC conjugate is at **0.25 mg/ml** with a FITC/Antibody molar ratio of 4.0.

**PERFORMANCE:** Five  $\times 10^5$  ficoll prepared **human peripheral white blood cells** were washed and incubated 45 minutes on ice with 80 µl of anti-CD23/FITC at a **1:50** dilution (5mg/ml). Cells were washed three times, fixed and analyzed by FACS. A net **2.8%** sub population of the cells stained positive with a mean shift of **1.03** log<sub>10</sub> fluorescent units when compared to a Mouse IgG1/FITC negative control (Catalog #278-040) at a similar concentration. This shift was blocked when cells were pre incubated 10 minutes with 20 µl of 0.5 mg/ml anti-CD23 antibody (Catalog #172-020).

**Binding of anti-CD23/FITC to human PBMC**

*\*Research use only. Not for use in Diagnostic procedures.*