

PERFORMANCE DATA SHEET

2807

Monoclonal anti-human CD22/R-PE ***mAb name/Clone:** RFB4**Isotype:** Mouse IgG1**Immunogen:** Human tonsil lymphocytes**CATALOG#:** 171-050**QUANTITY:** 120 tests**VOLUME IN VIAL:** 0.2 ml**WORKING DILUTION:** 1:50 (or use 1.6µl of concentrated stock per 5 x 10⁵-cell test)

INFORMATION: Human CD22 expression is restricted to normal Ig⁺ mature B cells and neoplastic B cells. CD22 is a transmembrane glycoprotein of 140 kd with a predicted adhesion molecule function. Antibody RFB4 recognizes a CD22 molecule of about 140 kd.

References: D. Campana, et al, (1985) J Immunol **134**: 1524-1530. J.L. Li, et al, (1989) Cell Immunol **118**: 85-99. Leukocyte Typing IV (W. Knapp, et al, eds.) Oxford University Press, Oxford, (1989) p. 190-193. Leukocyte Typing V (S.F. Schlossman, et al, eds.) Oxford University Press, Oxford, (1995) p. 523-530. D. Shan & O.W. Press, (1995) J Immunol **154**: 4466-4475.

STORAGE CONDITIONS: Store at 2 - 5°C. **Do not freeze! Protect from light.**

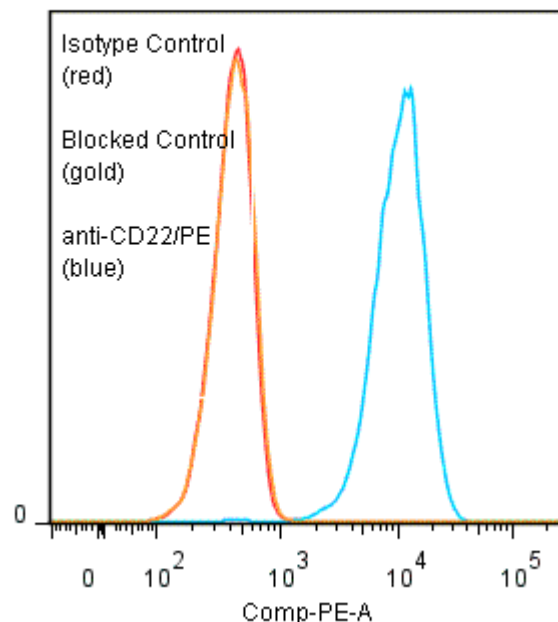
PRODUCT STABILITY: Product should retain activity for at least 12 months after shipping date when stored as recommended. Ship Date: _____

BUFFER: 50 mM Sodium Phosphate pH 7.5, 500 mM Potassium Chloride, 150mM NaCl, 15% Glycerol, 0.2% BSA, 0.04% NaN₃ (as a preservative).

PRODUCTION: Protein A purified antibody from tissue culture supernatant was conjugated to R-Phycoerythrin through a sulfo-ester linkage. Unconjugated antibody was removed using size exclusion chromatography. Antibody conjugate is at **0.5 mg/ml** with a A₅₆₅/A₂₈₀ ratio of 3.4.

PERFORMANCE: Five x 10⁵ cultured **Raji** human tumor cells were washed and incubated 45 minutes on ice with 80 µl of anti-CD22/R-PE at a **1:50** dilution (10 µg/ml). Cells were washed three times, fixed and analyzed by FACS. Cells stained positive with a mean shift of **1.49** log₁₀ fluorescent units when compared to a Mouse IgG1/PE negative control (Catalog # 278-050) at a similar concentration. Binding was blocked when cells were pre incubated 10 minutes with 20 µl of 0.5 mg/ml anti-CD22 antibody (Catalog #171-020).

Binding of anti-CD22/PE to human Raji cells



* **Research Use Only. Not for use in Diagnostic procedures.**

Ancell Corporation P.O. Box 87 Bayport, MN 55003-0087 USA
Phone: Toll free 800-374-9523 or 651-439-0835 Fax: 651-439-1940