

PERFORMANCE DATA SHEET

3203

Monoclonal anti-human CD22/FITC*

Clone: RFB4

Isotype: Mouse IgG1

Immunogen: Human tonsil lymphocytes

CATALOG#: 171-040

QUANTITY: 120 tests

VOLUME IN VIAL: 0.2 ml

WORKING DILUTION: 1:50 (or use 1.6µl of concentrated stock per 5 x 10⁵-cell test)

INFORMATION: Antibody RFB4 recognizes a CD22 molecule of approximately 135 kd present on greater than 90% of peripheral B cells.

Reference: D. Campana, et al. J Immunol (1985) 134: 1524-1530.

STORAGE CONDITIONS: Store at 2 - 5°C. *Freeze/Thawing is not recommended. Protect from light.*

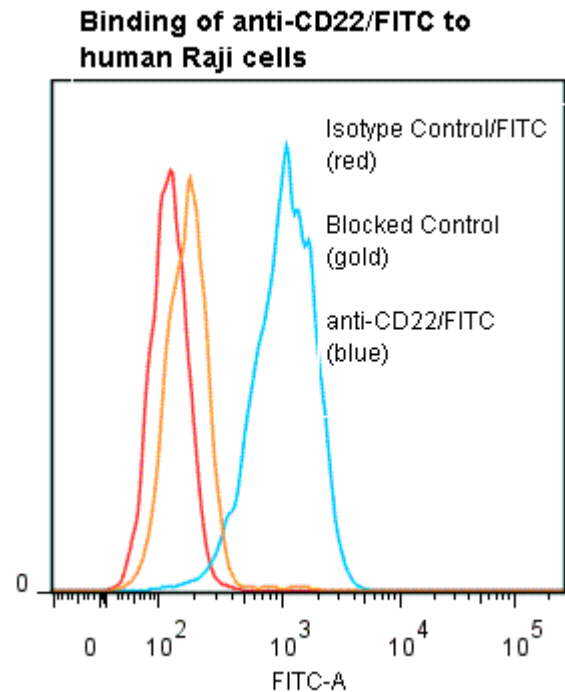
PRODUCT STABILITY: Product should retain activity for at least 12 months after shipping date when stored as recommended. Ship Date: _____

BUFFER: 50 mM Sodium Phosphate pH 7.5, 100 mM Potassium Chloride, 150mM NaCl, 5% Glycerol, 0.2% BSA, 0.04% NaN₃ (as a preservative).

PURITY: Pre conjugation antibody preparation was >95% Immunoglobulin by SDS-PAGE.

PRODUCTION: Antibody was Protein A purified from (low FBS containing) tissue culture supernatant and reacted with FITC. Unconjugated FITC was removed from conjugate using a desalting column. Antibody conjugate is at a concentration of 0.5 mg/ml.

PERFORMANCE: Five x 10⁵ cultured **Raji** cells were washed and preincubated 5 minutes with 20 µl of 250 µg/ml human IgG (To block non specific binding) after which they were incubated 45 minutes on ice with 80 µl of anti-CD22/FITC at a 1:50 dilution (10 µg/ml). Cells were washed three times, fixed and analyzed by FACS. Cells stained positive with a mean shift of 1.16 log₁₀ fluorescent units when compared to a Mouse IgG1/FITC negative control (Catalog #278-040).



* *Research Use Only. Not for use in Diagnostic procedures.*