

## PERFORMANCE DATA SHEET

1747

# Monoclonal anti-human CD22/Biotin\*

**mAb name/Clone:** RFB4

**Isotype:** Mouse IgG1

**Immunogen:** Human tonsil lymphocytes

**CATALOG#:** 171-030

**QUANTITY:** 100 µg

**CONCENTRATION:** 1.0 mg/ml

**INFORMATION:** Human CD22 expression is restricted to normal Ig<sup>+</sup> mature B cells and neoplastic B cells. CD22 is a transmembrane glycoprotein of 140 kd with a predicted adhesion molecule function. Antibody RFB4 recognizes a CD22 molecule of about 140 kd.

**References:** D. Campana, et al, (1985) J Immunol **134**: 1524-1530. J.L. Li, et al, (1989) Cell Immunol **118**: 85-99. Leukocyte Typing IV (W. Knapp, et al, eds.) Oxford University Press, Oxford, (1989) p. 190-193. Leukocyte Typing V (S.F. Schlossman, et al, eds.) Oxford University Press, Oxford, (1995) p. 523-530. D. Shan & O.W. Press, (1995) J Immunol **154**: 4466-4475.

**STORAGE CONDITIONS:** Store at 2 - 5°C. Freeze/thawing not recommended.

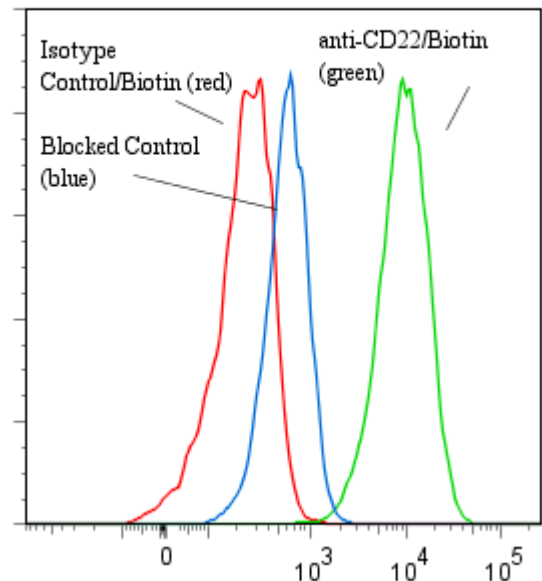
**PRODUCT STABILITY:** Product should retain activity for at least 12 months after shipping date when stored as recommended. Ship Date: \_\_\_\_\_

**BUFFER:** 50 mM Sodium Phosphate pH 7.5, 100 mM Potassium Chloride, 150mM NaCl, 5% Glycerol, 0.2% BSA, 0.04% NaN<sub>3</sub> (as a preservative).

**PRODUCTION:** Antibody from (low FBS containing) tissue culture supernatant was Protein A purified to >95% mouse immunoglobulin by SDS-PAGE (<1% bovine immunoglobulin), and reacted with NHS-Biotin. Unconjugated Biotin was removed from conjugate using a desalting column.

**PERFORMANCE:** Five x 10<sup>5</sup> cultured **Raji** cells were washed and pre incubated 5 minutes with 20 µl human IgG at 300 µg/ml (to block non specific binding) after which they were incubated 45 minutes on ice with 80 µl of anti-CD22/Biotin at 5 µg/ml. Cells were then washed twice and incubated 45 minutes with 2<sup>o</sup> reagent Streptavidin/R-Phycoerythrin (Catalog #253-050), after which they were washed three times, fixed and analyzed by FACS. Cells stained positive with a mean shift of 1.56 log<sub>10</sub> fluorescent units when compared to a Mouse IgG1/Biotin negative control (Catalog #278-030) at a similar concentration. Binding was blocked when cells were pre incubated with 20 µl of 0.5mg/ml anti-CD22 mAb (Cat #171-020).

**Binding of anti-CD22/Biotin + SA/PE to human Raji cells**



*\*This Product is intended for Laboratory Research use only.*

**Ancell Corporation P.O. Box 87 243 Third Street North Bayport, MN 55003-0087 USA**  
**Phone: Toll free 800-374-9523 or 612-439-0835 Fax: 612-439-1940**