

PERFORMANCE DATA SHEET

1747

Monoclonal anti-human CD22/Biotin*

mAb name/Clone: RFB4

Isotype: Mouse IgG1

Immunogen: Human tonsil lymphocytes

CATALOG#: 171-030

QUANTITY: 100 µg

CONCENTRATION: 1.0 mg/ml

INFORMATION: Human CD22 expression is restricted to normal Ig+ mature B cells and neoplastic B cells. CD22 is a transmembrane glycoprotein of 140 kd with a predicted adhesion molecule function. Antibody RFB4 recognizes a CD22 molecule of about 140 kd.

References: D. Campana, et al, (1985) J Immunol **134**: 1524-1530. J.L. Li, et al, (1989) Cell Immunol **118**: 85-99. Leukocyte Typing IV (W. Knapp, et al, eds.) Oxford University Press, Oxford, (1989) p. 190-193. Leukocyte Typing V (S.F. Schlossman, et al, eds.) Oxford University Press, Oxford, (1995) p. 523-530. D. Shan & O.W. Press, (1995) J Immunol **154**: 4466-4475.

STORAGE CONDITIONS: Store at 2 - 5°C. Freeze/thawing not recommended.

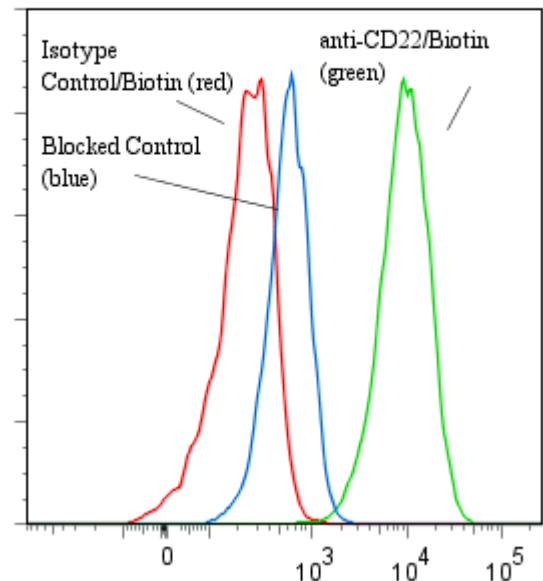
PRODUCT STABILITY: Product should retain activity for at least 12 months after shipping date when stored as recommended. Ship Date: _____

BUFFER: 50 mM Sodium Phosphate pH 7.5, 100 mM Potassium Chloride, 150mM NaCl, 5% Glycerol, 0.2% BSA, 0.04% NaN₃ (as a preservative).

PRODUCTION: Antibody from (low FBS containing) tissue culture supernatant was Protein A purified to >95% mouse immunoglobulin by SDS-PAGE (<1% bovine immunoglobulin), and reacted with NHS-Biotin. Unconjugated Biotin was removed from conjugate using a desalting column.

PERFORMANCE: Five x 10⁵ cultured **Raji** cells were washed and pre incubated 5 minutes with 20 µl human IgG at 300 µg/ml (to block non specific binding) after which they were incubated 45 minutes on ice with 80 µl of anti-CD22/Biotin at **5 µg/ml**. Cells were then washed twice and incubated 45 minutes with 2^o reagent Streptavidin/R-Phycoerythrin (Catalog #253-050), after which they were washed three times, fixed and analyzed by FACS. Cells stained positive with a mean shift of **1.56 log₁₀** fluorescent units when compared to a Mouse IgG1/Biotin negative control (Catalog #278-030). Binding was blocked when cells were pre incubated with 20 µl of 0.5mg/ml anti-CD22 mAb (Cat #171-020).

Binding of anti-CD22/Biotin + SA/PE to human Raji cells



* *Research Use Only. Not for use in Diagnostic procedures.*