

PERFORMANCE DATA SHEET

1816

Monoclonal anti-human CD22*

mAb name/Clone: RFB4

Isotype: Mouse IgG1

Immunogen: Human tonsil lymphocytes

CATALOG#: 171-020

QUANTITY: 100 µg

CONCENTRATION: 1.0 mg/ml

INFORMATION: Human CD22 expression is restricted to normal Ig+ mature B cells and neoplastic B cells. CD22 is a transmembrane glycoprotein of 140 kd with a predicted adhesion molecule function. Antibody RFB4 recognizes a CD22 molecule of about 140 kd.

References: D. Campana, et al, (1985) J Immunol **134**: 1524-1530. J.L. Li, et al, (1989) Cell Immunol **118**: 85-99. Leukocyte Typing IV (W. Knapp, et al, eds.) Oxford University Press, Oxford, (1989) p. 190-193. Leukocyte Typing V (S.F. Schlossman, et al, eds.) Oxford University Press, Oxford, (1995) p. 523-530. D. Shan & O.W. Press, (1995) J Immunol **154**: 4466-4475.

STORAGE CONDITIONS: Store at 2 - 5°C. Freeze/Thawing is not recommended.

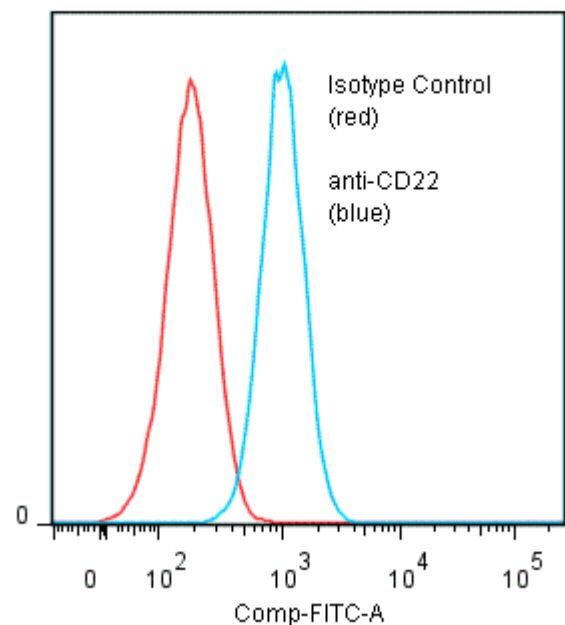
PRODUCT STABILITY: Product should retain activity for at least 12 months after shipping date when stored as recommended. Ship Date: _____

BUFFER: 50 mM Sodium Phosphate pH 7.5, 100 mM Potassium Chloride, 150mM NaCl, 0.5 mg/ml Gentamicin Sulfate (as a preservative).

PRODUCTION: Antibody was Protein A purified from (low FBS containing) tissue culture supernatant. Purity was >95% Immunoglobulin by SDS-PAGE and contains less than 1% Bovine Immunoglobulin.

PERFORMANCE: Five x 10⁵ cultured **Raji** cells were incubated 45 minutes on ice with 80 µl of anti-CD22 antibody at 5 µg/ml. Cells were washed twice and incubated with 2^o reagent Goat anti-Mouse IgG/FITC (Catalog #232-011), after which they were washed three times, fixed and analyzed by FACS. Cells stained positive with a mean shift of 0.74 log₁₀ fluorescent units when compared to a Mouse IgG1 negative control (Catalog #278-010).

Binding of anti-CD22 mAb +GAM/FITC to human Raji cells



* *Research Use Only. Not for use in Diagnostic procedures.*