

**PERFORMANCE DATA SHEET**

2519

**Monoclonal anti-human CD21 (CR2)\***

**mAb name/Clone:** BU33

**Isotype:** Mouse IgG1

**Immunogen:** Human HFB-1 cell line

**CATALOG#:** 170-820 (Preservative-free)

**QUANTITY:** 100 µg

**CONCENTRATION:** 1.0 mg/ml

**INFORMATION:** Human CD21 is a receptor for complement fragments C3d, C3dg or ic3D and also EBV. CD21 is also a ligand for CD23 and plays a role in IgE synthesis. Antibody BU33 recognizes the CD21 molecule of about 145 kd. Antibody BU33 inhibits binding to CD23.

**References:** Leukocyte Typing V (S.F. Schlossman, et al, eds.) Oxford University Press, Oxford, (1995) p. 516-523. Leukocyte Typing V (S.F. Schlossman, et al, eds.) Oxford University Press, Oxford, (1995) p. 535-538. J.Y. Bonnefoy, et al, (1995) Intl Archiv Allergy Immunol **107**: 40-42. A.D. Beaulieu, et al, (1995) Blood **86**: 2789-2798. H. Molina, et al, (1995) J Immunol **154**: 5426-5435.

**STORAGE CONDITIONS:** Store at 2 - 5°C. Freeze/Thawing is not recommended. *Open under aseptic conditions.*

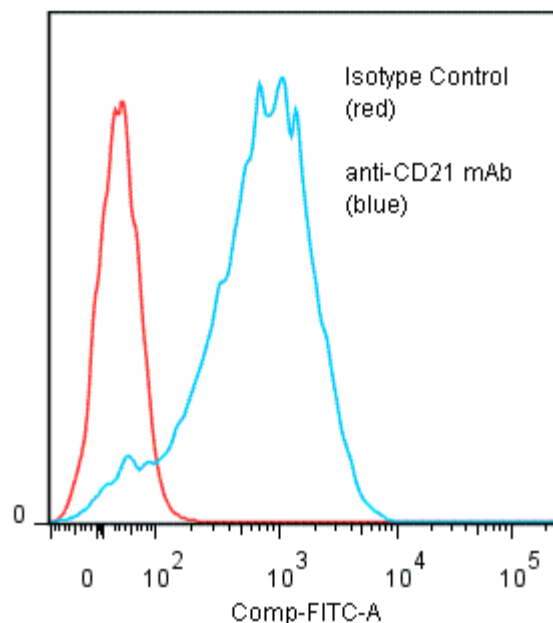
**PRODUCT STABILITY:** Product should retain activity for at least 12 months after shipping date when stored as recommended. Ship Date: \_\_\_\_\_

**BUFFER:** 50 mM Sodium Phosphate pH 7.5, 100 mM Potassium Chloride, 150mM NaCl.

**PRODUCTION:** Antibody was Protein A purified from (low FBS containing) tissue culture supernatant. Purity was >95% Immunoglobulin by SDS-PAGE and contains less than 1% Bovine Immunoglobulin. Product was 0.2µ sterile filtered and vialled under aseptic conditions.

**PERFORMANCE:** Five x 10<sup>5</sup> cultured **HPB-MLT** cells were washed and incubated 45 minutes on ice with 80 µl of anti-CD21 antibody at **20 µg/ml**. Cells were washed twice and incubated with 2<sup>o</sup> reagent Goat anti-Mouse IgG/FITC (Catalog #232-011), after which they were washed three times, fixed and analyzed by FACS. Cells stained positive with a mean shift of **1.47 log<sub>10</sub>** fluorescent units when compared to a Mouse IgG1 negative control (Catalog # 278-010).

**Binding of anti-CD21 mAb +GAM/FITC to human HPB-MLT cells**



*\*Research use only. Not for use in Diagnostic procedures.*