

**PERFORMANCE DATA SHEET**

2321

**Monoclonal anti-human CD21(CR2)/Biotin\***

**mAb name/Clone:** BU33

**Isotype:** Mouse IgG1

**Immunogen:** Human HFB-1 cell line

**CATALOG#:** 170-030

**QUANTITY:** 100 µg

**CONCENTRATION:** 1.0 mg/ml

**INFORMATION:** Human CD21 is a receptor for complement fragments C3d, C3dg or ic3D and also EBV. CD21 is also a ligand for CD23 and plays a role in IgE synthesis. Antibody BU33 recognizes the CD21 molecule of about 145 kd. Antibody BU33 inhibits binding to CD23.

**References:** Leukocyte Typing V (S.F. Schlossman, et al, eds.) Oxford University Press, Oxford, (1995) p. 516-523. Leukocyte Typing V (S.F. Schlossman, et al, eds.) Oxford University Press, Oxford, (1995) p. 535-538. J.Y. Bonnefoy, et al, (1995) Intl Archiv Allergy Immunol **107**: 40-42. A.D. Beaulieu, et al, (1995) Blood **86**: 2789-2798. H. Molina, et al, (1995) J Immunol **154**: 5426-5435.

**STORAGE CONDITIONS:** Store at 2 - 5°C. Freeze/thawing not recommended.

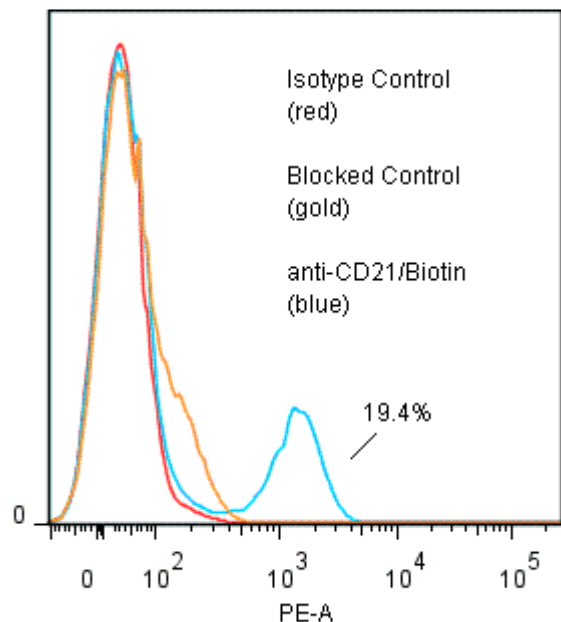
**PRODUCT STABILITY:** Product should retain activity for at least 12 months after shipping date when stored as recommended. Ship Date: \_\_\_\_\_

**BUFFER:** 50 mM Sodium Phosphate pH 7.5, 100 mM Potassium Chloride, 150mM NaCl, 5% Glycerol, 0.2% BSA, 0.04% NaN<sub>3</sub> (as a preservative).

**PRODUCTION:** Antibody from (low FBS containing) tissue culture supernatant was Protein A purified to >95% mouse immunoglobulin by SDS-PAGE (<1% bovine immunoglobulin), and reacted with NHS-Biotin. Unconjugated Biotin was removed from conjugate using a desalting column.

**PERFORMANCE:** Five x 10<sup>5</sup> ficoll prepared human Peripheral blood mononuclear cells per tube were washed and pre incubated with 20µl of 300µg/ml human IgG (to block non specific binding) after which they were incubated 45 minutes on ice with 80 µl of anti-CD21/Biotin at 5 µg/ml. Cells were washed twice and incubated with 2<sup>o</sup> reagent Streptavidin/R-Phycoerythrin (Catalog #253-050), after which they were washed three times, fixed and analyzed by FACS. A **19.4 %** sub population of cells stained positive with a mean shift of **1.64 log<sub>10</sub>** fluorescent units when compared to a Mouse IgG1/Biotin negative control (Catalog #278-030) at a similar concentration. Binding was blocked when cells were pre incubated 10 minutes with 20 µl of 0.5 mg/ml anti-CD21 antibody. (Catalog #170-020).

**Binding of anti-CD21/Biotin +SA/PE to human PBL**



*\*Research use only. Not for use in Diagnostic procedures.*